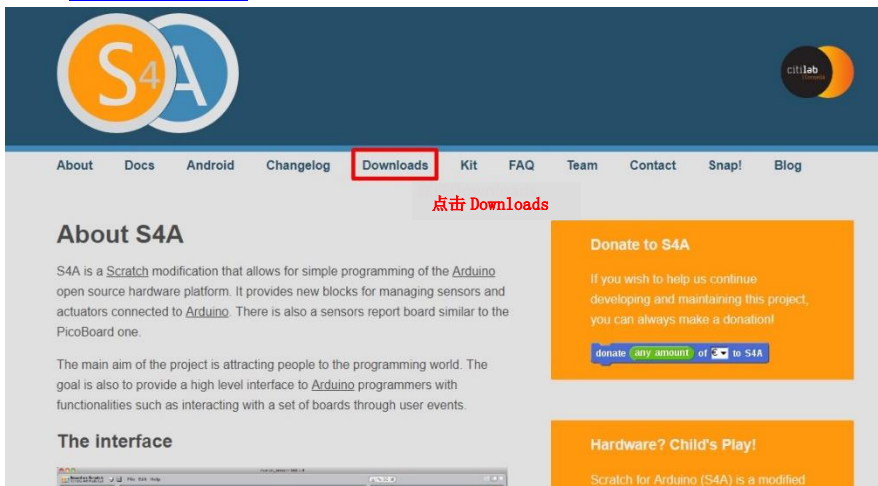


## 一、下载软件与固件驱动

1.从 <http://s4a.cat> 进入 S4A 官方网站后，点选上方 Downloads 选项



2.依照使用的计算机操作系统下载 S4A 软件以及 Arduino 官方开发环境与固件



3.下载 Arduino 开发环境:

进入到 Arduino 官方网站后，点选上方 SOFTWARE 选项进入到下载页面，将语言改为中文后在下方点选下载“软件的老版本”。



#### 4.依照使用的操作系统来下载(1.0.6 版本)

HOME BUY SOFTWARE PRODUCTS LEARNING COMMUNITY SUPPORT

PREVIOUS IDE Releases

**ARDUINO 1.8.4**  
Arduino IDE that can be used with any Arduino board, including the Arduino Yun and Arduino DUE. Refer to the Getting Started page for installation instructions. See the release notes.  
Windows Installer  
Windows ZIP file for non-admin install  
Mac OS X 10.7 Lion or newer  
Linux 32 bits  
Linux 64 bits  
Linux ARM  
Source

**ARDUINO 1.0.6**  
Classic Arduino IDE, to be used with any Arduino board, but Arduino Yun and Arduino DUE. Refer to the Getting Started page for installation instructions. See the release notes.  
Windows installer  
Windows ZIP file for non-admin install  
Mac OS X  
Linux 32 bits  
Linux 64 bits  
Source

依照所使用的系统下载 Arduino 1.0.6 开发环境

Consider supporting the Arduino Software by contributing to its development. (US tax payers, please note this contribution is not tax deductible). Learn more on how your contribution will be used.

SINCE MARCH 2015, THE ARDUINO IDE HAS BEEN DOWNLOADED **21 109 319** TIMES. (IMPRESSIVE!) NO LONGER JUST FOR ARDUINO AND GENUINO BOARDS, HUNDREDS OF COMPANIES AROUND THE WORLD ARE USING THE IDE TO PROGRAM THEIR DEVICES, INCLUDING COMPATIBLES, CLONES, AND EVEN COUNTERFEITS. HELP ACCELERATE ITS DEVELOPMENT WITH A SMALL CONTRIBUTION! REMEMBER: OPEN SOURCE IS LOVE!

\$3 \$5 \$10 \$25 \$50 OTHER

点击“只要下载”

JUST DOWNLOAD CONTRIBUTE & DOWNLOAD

#### 5.下载 Arduino 固件:

在 Download our firmware from “here”处点击鼠标右键，将目标另存为，即可将固件下载下来。

About Docs Android Changelog Downloads Kit FAQ

This firmware is a piece of software you need to install into your Arduino board to be able to communicate with it from S4A.

- Download and install the Arduino environment by following the instructions on <http://arduino.cc/en/Main/Software>. Take in account Arduino Uno requires at least version 0022.
- Download our firmware from **here**
- Connect your Arduino board to a computer
- Open the firmware file (S4AFirmware16.hex)
- In the Tools menu, select the board you want to use. The board is connected
- Load the firmware into your board

在此按右键，点选“将目标另存为”（依照不同的浏览器而定）

在新分頁中開啟連結(T)  
在新視窗中開啟連結(W)  
在無痕式視窗中開啟連結(G)  
另存連結為(K)...  
複製連結網址(E)  
檢查(N) Ctrl+Shift+I

### Arduino drivers

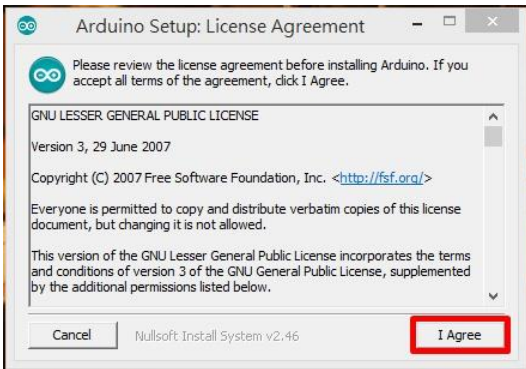
If you are a Microsoft Windows user, you may need to install the Arduino drivers into your computer:

#### 6.当文档成功下载完成后，有以下三个文档代表已成功准备好所需的文档。

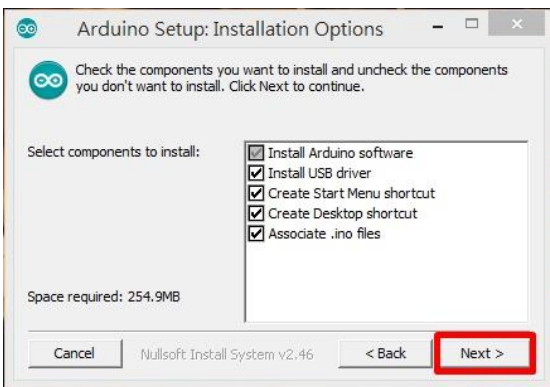
arduino-1.0.6-windows S4A16 S4AFirmware16

## 二、安装软件：

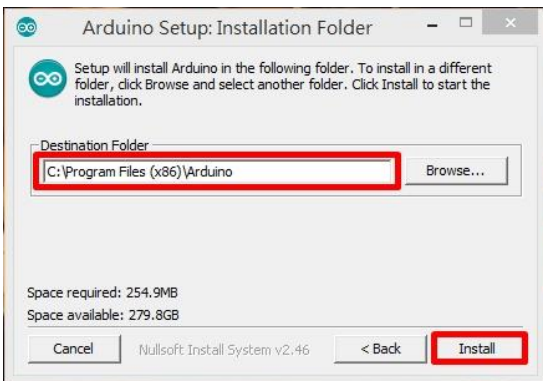
### 1. 点选 Arduino-1.0.6-wondows 进行安装 相关声明，点选“I Agree”



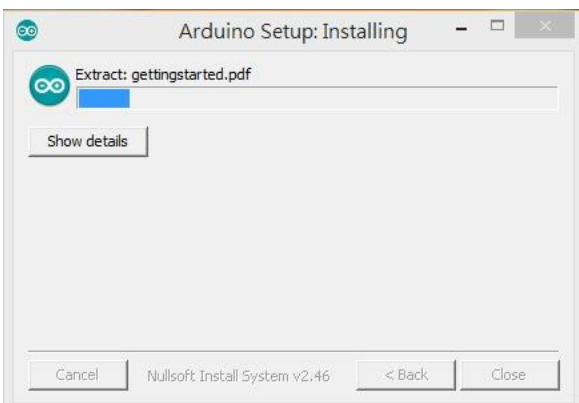
### 默认安装项目，全选后点选” Next”



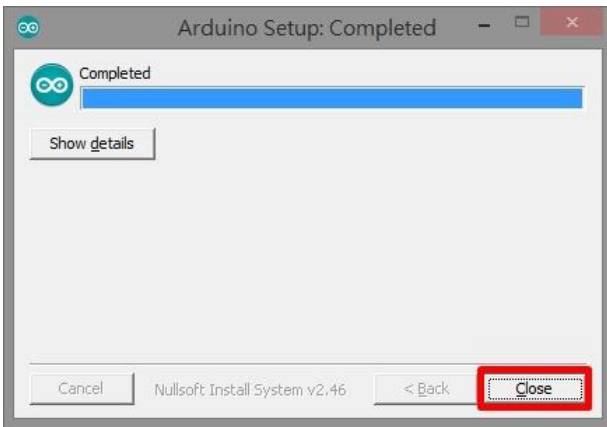
### 选择安装路径后点选 “install” 开始安装



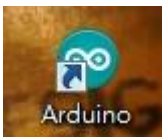
### 安装中



安装完成，点选“Close”结束安装程序

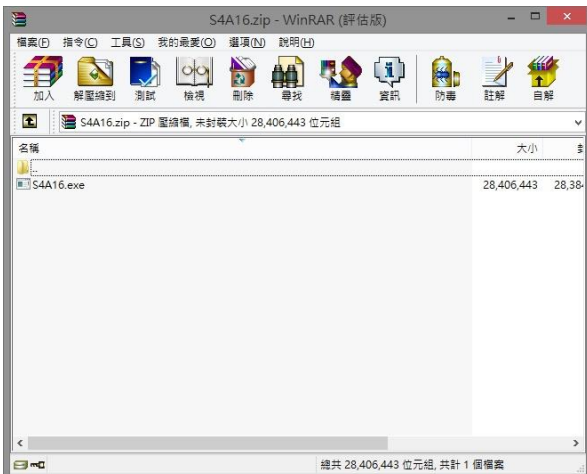


桌面出现此图标代表已成功安装 Arduino 开发环境。



## 2.安装 S4A 软件

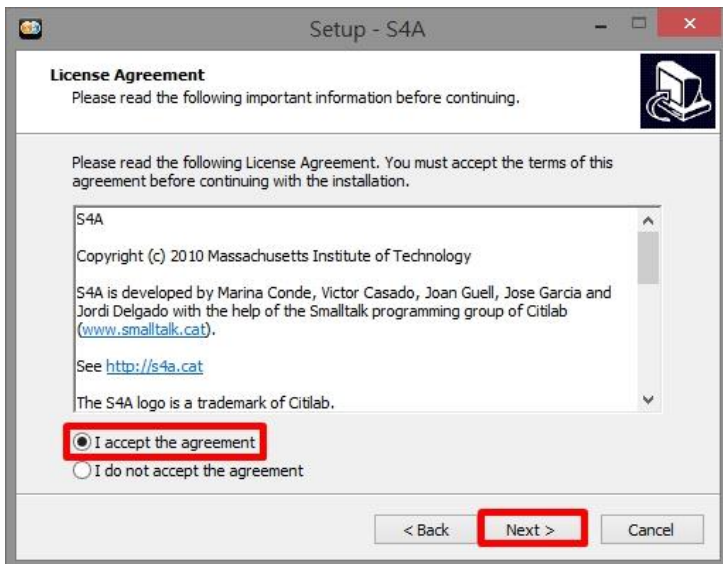
开启 S4A16 文档(此为压缩文件，需安装解压缩软件)



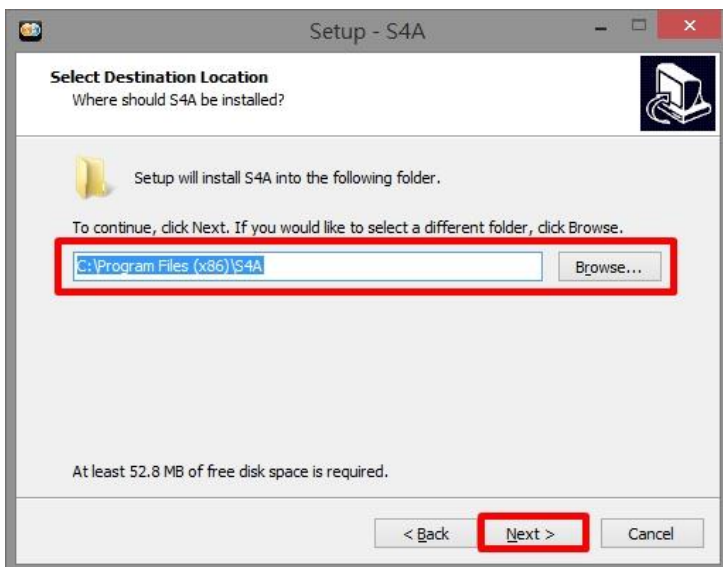
执行 S4A16.exe 后进入到以下启动安装程序，点选“Next”进行安装



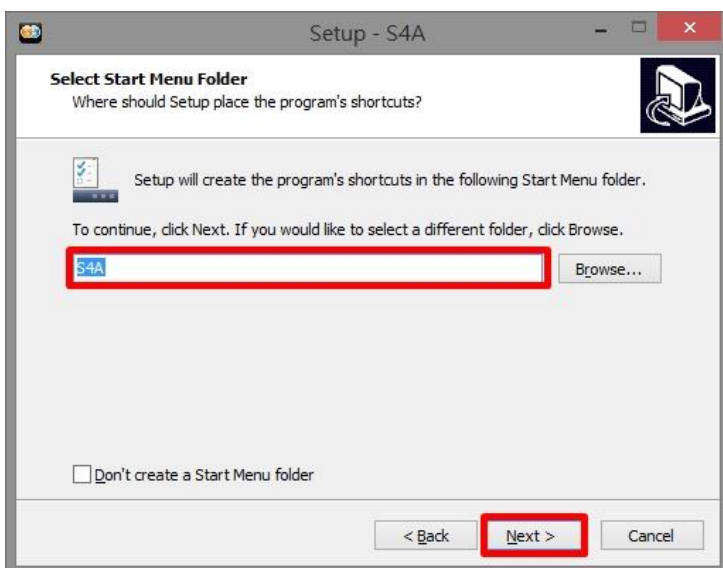
版权声明，点选"I accept the agreement"后点选"Next"进行下一步



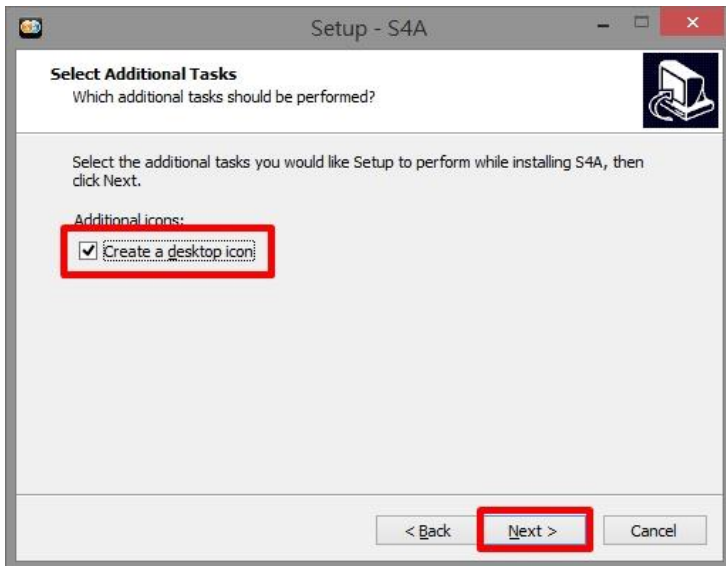
设定安装的位置后点选"Next"后进行下一步



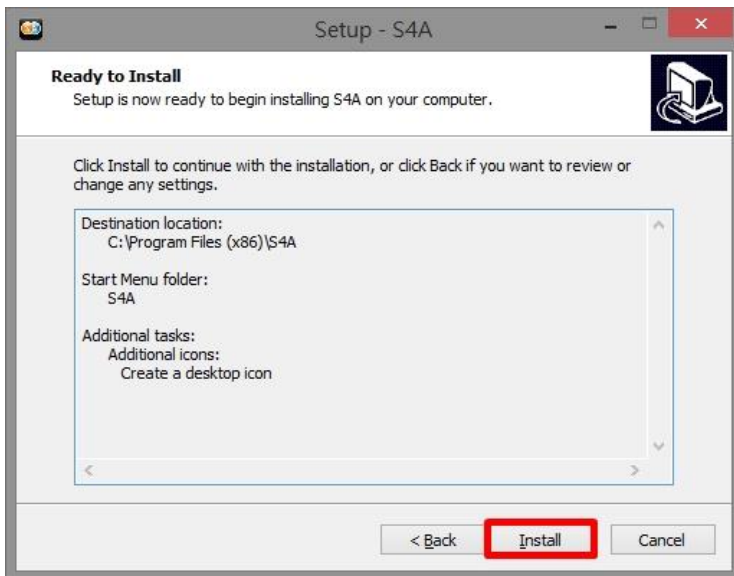
再启动字段所显示的名称，点选"Next"后进行下一步



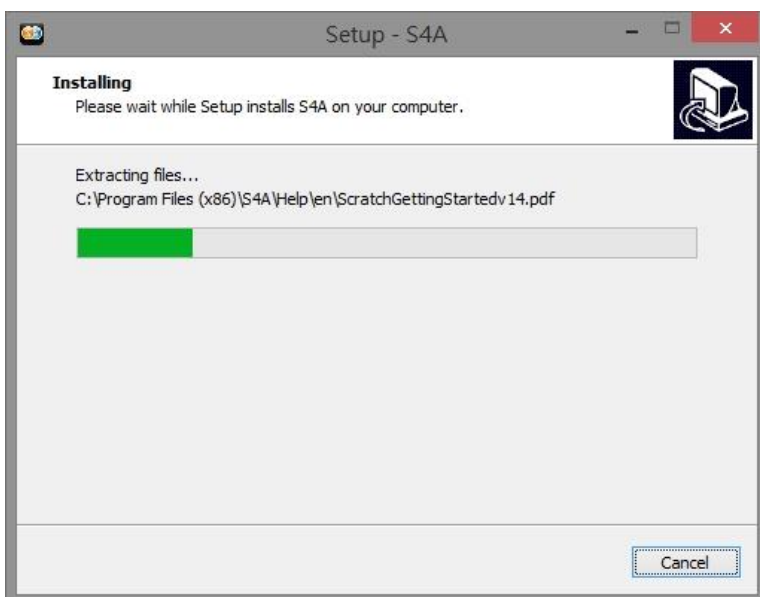
是否在桌面显示图标，点选“Next”后进行下一步



确认刚刚的选项后点选“Install”后开始进行安装



安装程序中



安装完成，点选 Finish 离开安装程序



桌面上显示 S4A 图标后代表安装完成



### 3.安装 Arduino 固件:

将控制盒与计算机连接



点选 Arduino 启动 Arduino 开发环境

