

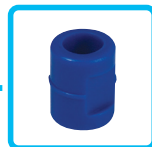
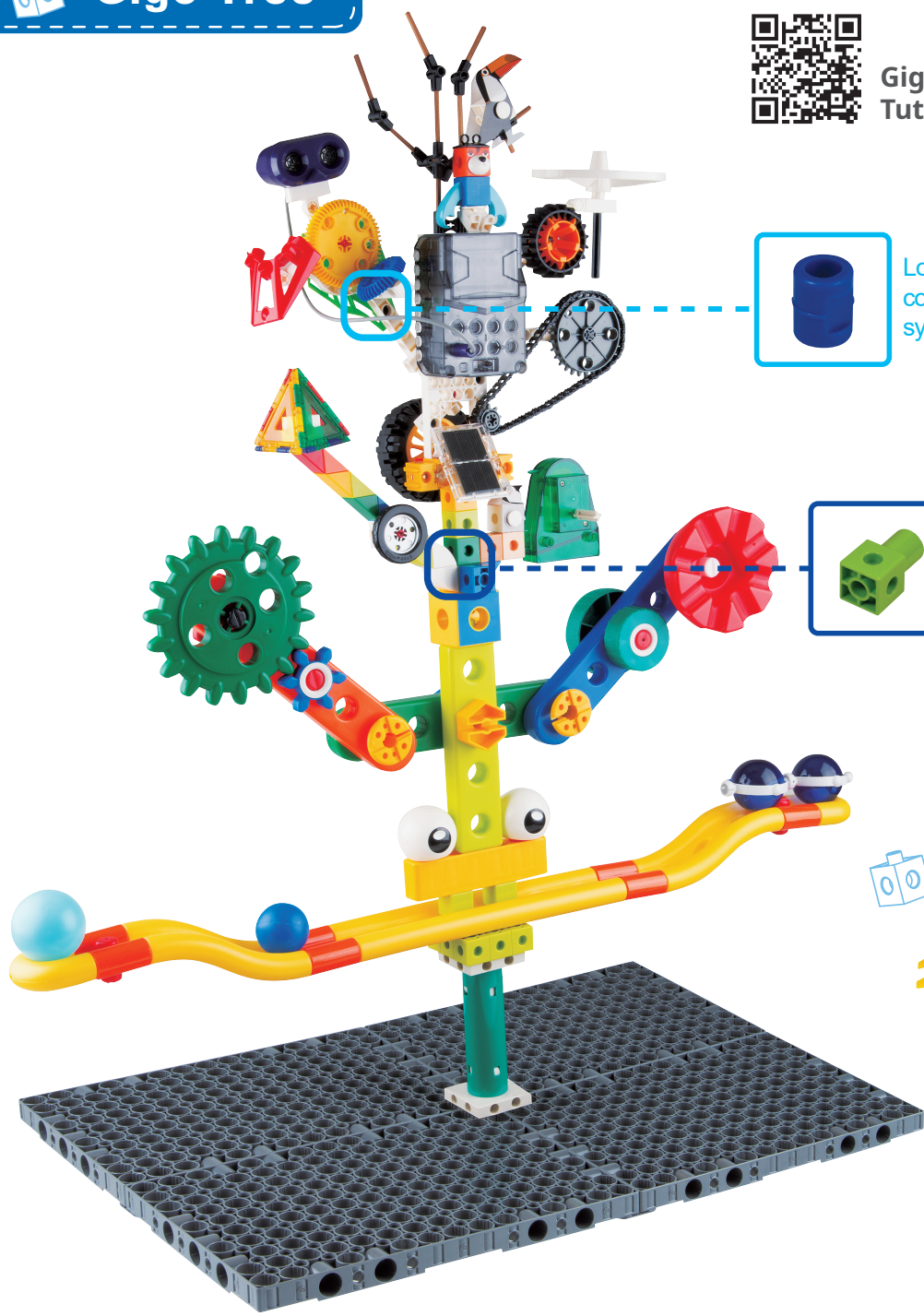
COMPONENTS

Information of components useful for freeing your inner creativity

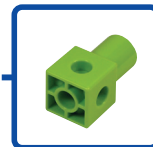
Gigo Tree



Gigo Tree Product Tutorial



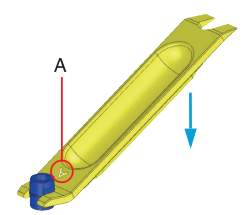
Long & Short Pegs can connect B Block and C Block system components.










2CM Cube Pegs can connect A Block and B Block system components.



Use the Peg Remover to remove connected parts.



- 1+ A BLOCK-4CM BLOCK 
- 7+ C BLOCK-1CM BLOCK 
- 1+ E BLOCK-PANEL 
- 6+ H BLOCK-SPRUE FRAME 

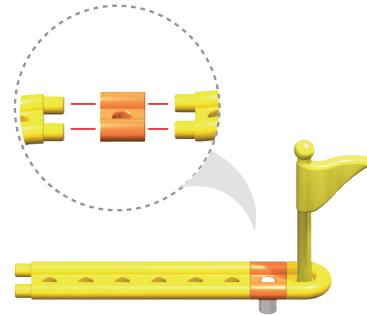
- 3+ B BLOCK-2CM BLOCK 
- 7+ D BLOCK-X GEO 
- 7+ F BLOCK-ULTRA LIGHT 

A BLOCK-4CM BLOCK-74 PCS

Total 609cs

BASIC

Used for all model construction, can be easily put together with connectors to develop creativity.



001	1A	7330-W11-E1R
NAME	3 HOLE ROUND ROD	
MATERIAL	PE	
SIZE	140*40*20 MM	



002	2A	7330-W11-D1B
NAME	5 HOLE ROUND ROD	
MATERIAL	PE	
SIZE	220*40*20 MM	



003	3A	7330-W11-W1B
NAME	TRIANGLE FRAME	
MATERIAL	PE	
SIZE	120*80*20 MM	



004	4A	7330-W11-H1G
NAME	2 HOLE ROD	
MATERIAL	PE	
SIZE	116*40*20 MM	



005	5A	7330-W11-I1G
NAME	4 HOLE ROD	
MATERIAL	PE	
SIZE	195*40*20 MM	



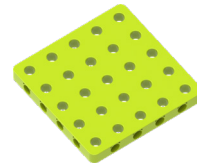
006	6A	7330-W11-J1P
NAME	4 HOLE BENDED ROD	
MATERIAL	PE	
SIZE	175*40*20 MM	



007	7A	7330-W11-C1W
NAME	2x3 HOLE BASE	
MATERIAL	PE	
SIZE	150*80*20 MM	



008	8A	8060-W11-F1Y
NAME	3x4 FRAME	
MATERIAL	PE	
SIZE	215*120*20 MM	



009	9A	7078-W10-A1G
NAME	BASE GRID	
MATERIAL	PP	
SIZE	200*200*20 MM	



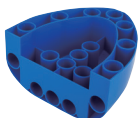
010	10A	7330-W11-N1Y
NAME	SLIDE TRACK	
MATERIAL	PE	
SIZE	165*60*40 MM	



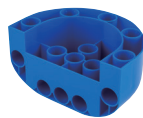
011	11A	7330-W11-L1Y
NAME	CURVED TRACK	
MATERIAL	PE	
SIZE	265*60*40 MM	



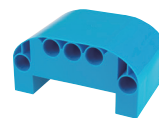
012	12A	7330-W11-K1Y
NAME	6 HOLE TRACK	
MATERIAL	PE	
SIZE	275*40*20 MM	



013	13A	7269-W10-A1B
NAME	HULL A	
MATERIAL	PP	
SIZE	110*120*60MM	



014	14A	7269-W10-A2B
NAME	HULL B	
MATERIAL	PP	
SIZE	80*120*60MM	



015	15A	7269-W10-B1B
NAME	HULL C	
MATERIAL	PP	
SIZE	80*120*60MM	

COMPONENTS

Information of components useful for freeing your inner creativity

DRIVE



016 **16A** 7331-W11-N1R

NAME	30mm CONNECTOR
MATERIAL	PE
SIZE (L*W*H)	30*15*16 MM



017 **17A** 7268-W11-B1T

NAME	40mm CONNECTOR
MATERIAL	PE
SIZE (L*W*H)	40*15*16MM



019 **19A** 7330-W11-A1R

NAME	80mm CONNECTOR
MATERIAL	PE
SIZE (L*W*H)	80*15*16 MM



022 **22A** 8036-W85-I1B

NAME	OD70 WHEEL
MATERIAL	HIPS
SIZE (L*W*H)	70*70*20 MM



025 **25A** 7331-W85-L1B

NAME	6T GEAR WITH ADAPTER
MATERIAL	HIPS
SIZE (L*W*H)	50*50*15 MM



028 **28A** 8060-W10-A2B

NAME	18T GEAR
MATERIAL	HIPS
SIZE (L*W*H)	130*130*15 MM



031 **31A** 8060-W11-H1D

NAME	180mm AXLE III
MATERIAL	PE
SIZE (L*W*H)	178*20*20 MM



018 **18A** 7330-W11-X1W

NAME	60mm CONNECTOR
MATERIAL	PE
SIZE (L*W*H)	60*15*16 MM



020 **20A** 7330-W11-B1G

NAME	160mm CONNECTOR
MATERIAL	PE
SIZE (L*W*H)	160*15*16 MM



023 **23A** 7268-W10-D1B

NAME	OD92 WHEEL
MATERIAL	HIPS
SIZE (L*W*H)	80*80*20MM



026 **26A** 8060-W85-A1B

NAME	18T GEAR WITH ADAPTER
MATERIAL	HIPS
SIZE (L*W*H)	130*130*15 MM



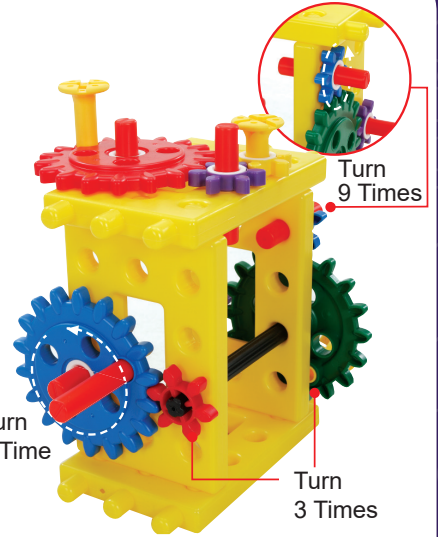
029 **29A** 8060-W11-G1D

NAME	60mm AXLE III
MATERIAL	PE
SIZE (L*W*H)	58*20*20 MM



032 **32A** E41#6001

NAME	A-CHAIN
MATERIAL	POM
SIZE (L*W*H)	17*25*5MM



021 **21A** 8036-W85-C1D

NAME	OD50 WHEEL
MATERIAL	HIPS
SIZE (L*W*H)	50*50*20 MM



024 **24A** 7268-W10-E1D

NAME	OD92 TIRE
MATERIAL	TPR
SIZE (L*W*H)	90*90*20MM



027 **27A** 7331-W10-L2R

NAME	6T GEAR
MATERIAL	HIPS
SIZE (L*W*H)	50*50*15 MM



030 **30A** 7268-W11-A1D

NAME	110mm AXLE I
MATERIAL	PE
SIZE (L*W*H)	110*15*15MM

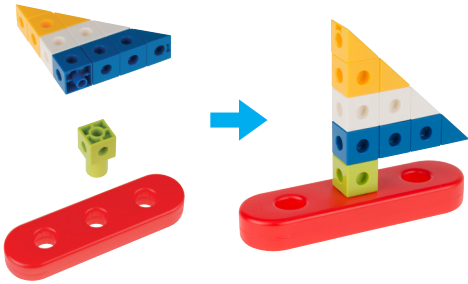


033 **33A** 1280-W85-A

NAME	A-MOTOR
MATERIAL	ABS
SIZE (L*W*H)	120*80*60MM

CONNECTION

Fix parts easily to make building big models possible.



034	34A	7268-W10-C10
NAME	AXLE CONNECTOR	
MATERIAL	ABS	
SIZE (L*W*H)	20*20*40MM	



035	35A	7331-W10-M1G
NAME	LATERAL PEG	
MATERIAL	ABS	
SIZE (L*W*H)	38*20*20 MM	



036	36A	7413-W10-V1G
NAME	FRONT PEG	
MATERIAL	ABS	
SIZE (L*W*H)	38*20*20 MM	



037	37A	7331-W10-D3G
NAME	2cm CUBE PEG	
MATERIAL	ABS	
SIZE (L*W*H)	38*20*20 MM	



038	38A	8036-W10-T1Y
NAME	NAIL	
MATERIAL	HIPS	
SIZE (L*W*H)	57*37*37MM	



039	39A	8036-W10-U1Y
NAME	SCREW	
MATERIAL	HIPS	
SIZE (L*W*H)	75*40*35MM	



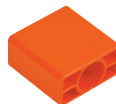
040	40A	8036-W10-W1B
NAME	NUT	
MATERIAL	HIPS	
SIZE (L*W*H)	40*32*18MM	



041	41A	8060-W85-D1Y
NAME	PEG ROD	
MATERIAL	HIPS	
SIZE (L*W*H)	120*50*20MM	



042	42A	8060-W85-D2Y
NAME	ROD	
MATERIAL	HIPS	
SIZE (L*W*H)	120*30*20MM	



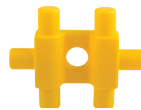
043	43A	7331-W10-E10
NAME	ROD CONNECTOR	
MATERIAL	ABS	
SIZE (L*W*H)	40*40*20MM	



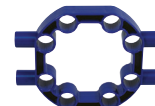
044	44A	7331-W10-A10
NAME	TRACK CONNECTOR	
MATERIAL	ABS	
SIZE (L*W*H)	60*40*20MM	



045	45A	7331-W10-B10
NAME	CURVED TRACK CONNECTOR	
MATERIAL	ABS	
SIZE (L*W*H)	95*60*20MM	



046	46A	7330-W11-O1Y
NAME	1 HOLE TRACK	
MATERIAL	PE	
SIZE (L*W*H)	95*75*20MM	



047	47A	7331-W10-C1B
NAME	ROUND FRAME	
MATERIAL	ABS	
SIZE (L*W*H)	135*100*20MM	



048	48A	7331-W10-F1W
NAME	TRACK HOLDER	
MATERIAL	ABS	
SIZE (L*W*H)	40*35*35 MM	



049	49A	7261-W11-D1B
NAME	Y SHAPE AXIS	
MATERIAL	PE	
SIZE (L*W*H)	82*90*20 MM	



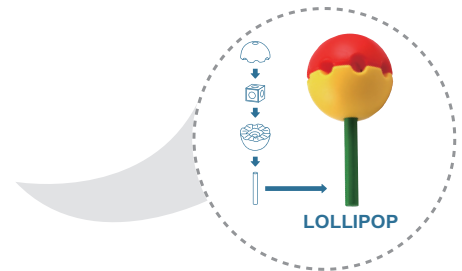
050	50A	7261-W85-B
NAME	CONNECTOR BASE	
MATERIAL	PP	
SIZE (L*W*H)	52*36*28MM	

COMPONENTS

Information of components useful for freeing your inner creativity

DECORATION

Used as decoration to make the model more realistic.



051	51A	8036-W85-S1B
NAME	TRIANGLE	
MATERIAL	HIPS	
SIZE (L*W*H)	55*40*38 MM	



052	52A	8036-W85-V1Y
NAME	CUBE	
MATERIAL	HIPS	
SIZE (L*W*H)	40*40*40 MM	



053	53A	8060-W11-E1Y
NAME	HEMISPHERE	
MATERIAL	PE	
SIZE (L*W*H)	95*95*50 MM	



054	54A	7261-W85-A
NAME	EYE	
MATERIAL	ABS	
SIZE (L*W*H)	40*45*45 MM	



055	55A	7330-W11-V1O
NAME	ARC FLAT PEG	
MATERIAL	PE	
SIZE (L*W*H)	80*45*20 MM	



056	56A	7330-W11-P1Y
NAME	TRACK END	
MATERIAL	PE	
SIZE (L*W*H)	70*60*20 MM	



057	57A	7331-W10-H1P
NAME	WALL	
MATERIAL	ABS	
SIZE (L*W*H)	120*80*50 MM	



058	58A	7331-W10-H2P
NAME	CURVED WALL	
MATERIAL	ABS	
SIZE (L*W*H)	190*80*40 MM	



059	59A	7331-W10-F2W
NAME	BUTTON FIXER	
MATERIAL	ABS	
SIZE (L*W*H)	25*25*15 MM	



060	60A	7330-W11-U1G
NAME	ARC TRIANGLE FLAT PEG	
MATERIAL	PE	
SIZE (L*W*H)	80*60*20 MM	



061	61A	1177-W10-D1B
NAME	SQUARE GEO BLOCK	
MATERIAL	ABS	
SIZE (L*W*H)	40*40*35 MM	



062	62A	1177-W10-D3B
NAME	TRIANGLE GEO BLOCK	
MATERIAL	ABS	
SIZE (L*W*H)	37*37*35 MM	



063	63A	1177-W10-D2B
NAME	CONVEX GEO BLOCK	
MATERIAL	ABS	
SIZE (L*W*H)	50*40*35 MM	



064	64A	1177-W10-D4B
NAME	CIRCLE GEO BLOCK	
MATERIAL	ABS	
SIZE (L*W*H)	40*40*35 MM	



065	65A	1280-W11-A1Y
NAME	A-FLEXI-TUBE	
MATERIAL	PE	
SIZE (L*W*H)	409*35*35MM	

TOOL



066 **66A** 8036-W11-J1G

NAME	HAMMER
MATERIAL	PE
SIZE (L*W*H)	175*70*40 MM



067 **67A** 8036-W11-G1B

NAME	WRENCH
MATERIAL	PE
SIZE (L*W*H)	160*60*15 MM



068 **68A** 8036-W11-D1P

NAME	SCREWDRIVER
MATERIAL	PE
SIZE (L*W*H)	180*35*35 MM



069 **69A** 8036-W85-E10

NAME	PLIERS
MATERIAL	PE
SIZE (L*W*H)	175*50*20 MM



070 **70A** 7330-W11-ZA1G

NAME	FLAG
MATERIAL	PE
SIZE (L*W*H)	200*80*25 MM



071 **71A** 7330-W11-M1B

NAME	40mm BALL
MATERIAL	PE
SIZE (L*W*H)	40*40*40 MM



072 **72A** 7330-W11-M2W

NAME	40mm FOOT BALL
MATERIAL	PE
SIZE (L*W*H)	40*40*40 MM



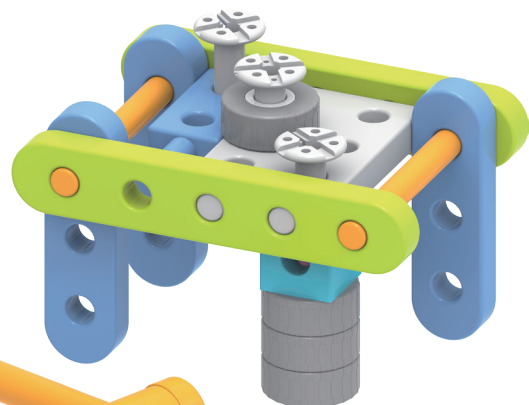
073 **73A** 7330-W11-Q1B

NAME	50mm BALL
MATERIAL	PE
SIZE (L*W*H)	50*50*50 MM

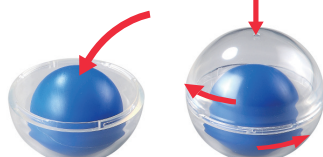


074 **74A** 7331-W85-G1

NAME	CAPSULE BALL
MATERIAL	ABS
SIZE (L*W*H)	58*58*58 MM



COUNTERCLOCKWISE



CLOCKWISE

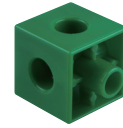
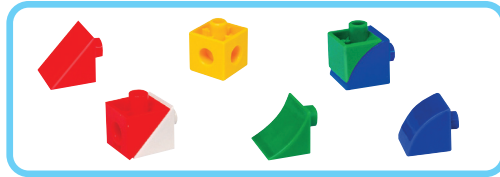
COMPONENTS

Information of components useful for freeing your inner creativity

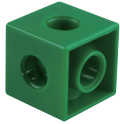
B BLOCK-2CM BLOCK-38 PCS

BASIC

Used for all model construction, can be easily put together with connectors to develop creativity.



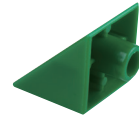
075	1B	880-W10-A1G
NAME	CUBE	
MATERIAL	ABS	
SIZE (L*W*H)	25*20*20 MM	



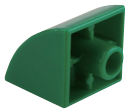
076	2B	880-W10-N1G
NAME	6 HOLE CUBE	
MATERIAL	ABS	
SIZE (L*W*H)	20*20*20 MM	



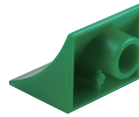
077	3B	880-W10-N3G
NAME	6 HOLE CUBE (AXLE)	
MATERIAL	ABS	
SIZE (L*W*H)	20*20*20 MM	



078	4B	880-W10-S1G
NAME	TRIANGLE	
MATERIAL	ABS	
SIZE (L*W*H)	25*20*20 MM	



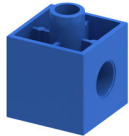
079	5B	880-W10-R1G
NAME	CONVEX	
MATERIAL	ABS	
SIZE (L*W*H)	25*20*20 MM	



080	6B	880-W10-D1G
NAME	CONCAVE	
MATERIAL	ABS	
SIZE (L*W*H)	25*20*20 MM	



081	7B	7344-W10-C2R
NAME	SHORT PEG	
MATERIAL	ABS	
SIZE (L*W*H)	10*8*8 MM	



082	8B	7128-W10-B1B1
NAME	3 HOLE CUBE	
MATERIAL	ABS	
SIZE (L*W*H)	20*20*20 MM	



083	9B	7128-W10-A10
NAME	FLAT CUBE	
MATERIAL	ABS	
SIZE (L*W*H)	20*20*10 MM	



084	10B	7128-W10-A2K
NAME	FLAT TRIANGLE	
MATERIAL	ABS	
SIZE (L*W*H)	20*20*10 MM	



085	11B	7128-W85-C1SK
NAME	JOINT	
MATERIAL	ABS	
SIZE (L*W*H)	26*20*20 MM	



086	12B	7462-W10-A1S
NAME	RAMP WALK CUBE	
MATERIAL	ABS	
SIZE (L*W*H)	20*10*10MM	



087	13B	7462-W10-A2S
NAME	RAMP WALK LEG A	
MATERIAL	ABS	
SIZE (L*W*H)	20*20*10MM	



088	14B	7462-W10-A3S
NAME	B-RAMP WALK LEG B	
MATERIAL	ABS	
SIZE (L*W*H)	20*20*10 MM	



089	15B	7462-W10-A4S
NAME	B-RAMP WALK AXLE	
MATERIAL	ABS	
SIZE (L*W*H)	20*20*10MM	



090	16B	880-W85-B1R
NAME	20T GEAR WITH AXLE	
MATERIAL	ABS+POM	
SIZE (L*W*H)	22*22*18 MM	



091	17B	880-W85-C1B
NAME	40T GEAR WITH AXLE	
MATERIAL	ABS+POM	
SIZE (L*W*H)	40*40*18 MM	

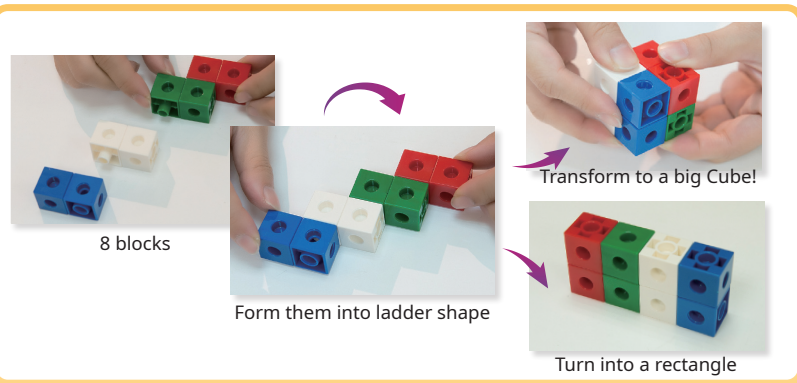


092	18B	880-W85-D1Y
NAME	60T GEAR WITH AXLE	
MATERIAL	ABS+POM	
SIZE (L*W*H)	60*60*18 MM	



093	19B	7453-W85-A
NAME	MOTOR	
MATERIAL	ABS+POM	
SIZE (L*W*H)	85*20*25MM	

Gigo 3 FOUNDATIONS-1



DECORATION

Used as decoration to make the model more realistic.



094 **20B** 7128-W10-E5B

NAME	CAP
MATERIAL	ABS
SIZE (L*W*H)	30*20*15 MM



095 **21B** 7128-W10-H2D

NAME	HAIR
MATERIAL	TPR
SIZE (L*W*H)	35*35*30 MM



096 **22B** 7128-W10-D5D

NAME	COILS
MATERIAL	ABS
SIZE (L*W*H)	20*20*15 MM



097 **23B** 7128-W22-1

NAME	EYE-1
MATERIAL	ABS
SIZE (L*W*H)	12*12*8 MM



098 **24B** 7128-W22-2

NAME	EYE-2
MATERIAL	ABS
SIZE (L*W*H)	12*12*8 MM



099 **25B** 7128-W10-E1B

NAME	GLOBAL PIECE
MATERIAL	ABS
SIZE (L*W*H)	10*10*15 MM



100 **26B** 7128-W10-E2O

NAME	CONICAL PIECE
MATERIAL	ABS
SIZE (L*W*H)	10*10*15 MM



101 **27B** 7128-W10-E3O

NAME	3-SIDED PYRAMID PIECE
MATERIAL	ABS
SIZE (L*W*H)	19*12*19 MM



102 **28B** 7128-W10-E4B1

NAME	4-SIDED PYRAMID PIECE
MATERIAL	ABS
SIZE (L*W*H)	20*15*10 MM



103 **29B** 7128-W10-F1B

NAME	LEFT HAND
MATERIAL	ABS
SIZE (L*W*H)	32*22*10 MM



COMPONENTS

Information of components useful for freeing your inner creativity



104	30B	7128-W10-F2B
NAME	RIGHT HAND	
MATERIAL	ABS	
SIZE (L*W*H)	32*22*10 MM	



105	31B	7128-W10-G10
NAME	HORN PIECE	
MATERIAL	PP	
SIZE (L*W*H)	18*20*12 MM	



106	32B	7182-W10-A1G
NAME	POLYGON PIECE	
MATERIAL	ABS	
SIZE (L*W*H)	56*19*19 MM	



107	33B	7128-W85-D1W
NAME	LEGS	
MATERIAL	ABS	
SIZE (L*W*H)	20*20*15 MM	



108	34B	7128-W85-D6
NAME	NOSE	
MATERIAL	ABS	
SIZE (L*W*H)	18*14*12 MM	



109	35B	880-W85-Q1D
NAME	WHEEL WITH AXLE	
MATERIAL	ABS+POM	
SIZE (L*W*H)	44*44*15 MM	



110	36B	7061-W10-B1Y
NAME	PEG REMOVER	
MATERIAL	POM	
SIZE (L*W*H)	92*18*10 MM	



111	37B	7061-W10-M1D
NAME	PALM	
MATERIAL	ABS	
SIZE (L*W*H)	15*10*10 MM	



112	38B	7430-W10-A1TB
NAME	CRYSTAL PIECE	
MATERIAL	PMMA	
SIZE (L*W*H)	13*13*16 MM	



You can use patented peg remover to extract the peg easily.

C BLOCK-1CM BLOCK-375 PCS

TRANSMISSION



113	1C	7026-W10-D2R
NAME	20T GEAR	
MATERIAL	ABS	
SIZE (L*W*H)	22*22*8 MM	



114	2C	7346-W10-C1B
NAME	40T GEAR	
MATERIAL	ABS	
SIZE (L*W*H)	42*42*8 MM	



115	3C	7408-W10-D1G
NAME	40T SPINDLE GEAR	
MATERIAL	ABS	
SIZE (L*W*H)	42*42*9 MM	



116	4C	7408-W10-D2YG
NAME	40T GEAR WITH HOLE	
MATERIAL	ABS	
SIZE (L*W*H)	42*42*9 MM	



117	5C	7026-W10-W5Y
NAME	60T GEAR	
MATERIAL	ABS	
SIZE (L*W*H)	62*62*8 MM	



118	6C	7328-W10-G2O
NAME	80T GEAR	
MATERIAL	ABS	
SIZE (L*W*H)	82*82*8 MM	



119	7C	7026-W10-G1P
NAME	160T GEAR	
MATERIAL	HIPS	
SIZE (L*W*H)	160*160*10 MM	



120	8C	7026-W10-J1R
NAME	160T GEAR ADAPTER	
MATERIAL	ABS	
SIZE (L*W*H)	33*25*4 MM	



121	9C	3569-W10-D2S1
NAME	10T CHAIN GEAR	
MATERIAL	ABS	
SIZE (L*W*H)	25*25*12 MM	



122	10C	3569-W10-D1S1
NAME	20T CHAIN GEAR	
MATERIAL	ABS	
SIZE (L*W*H)	45*45*12 MM	



123	11C	3569-W10-C1S1
NAME	30T CHAIN GEAR	
MATERIAL	ABS	
SIZE (L*W*H)	65*65*12 MM	



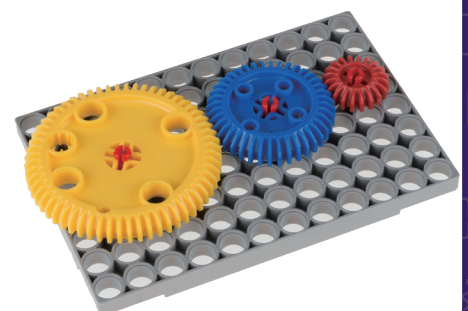
124	12C	3569-W10-B1D
NAME	CHAIN	
MATERIAL	POM	
SIZE (L*W*H)	12*10*3 MM	



125	13C	7344-W10-N3Y
NAME	OD33mm PULLEY	
MATERIAL	ABS	
SIZE (L*W*H)	23*23*8 MM	



126	14C	7344-W10-N2Y
NAME	OD33mm PULLEY	
MATERIAL	ABS	
SIZE (L*W*H)	33*33*8 MM	



COMPONENTS

Information of components useful for freeing your inner creativity



127	15C	7344-W10-N1Y
NAME	OD53mm PULLEY	
MATERIAL	ABS	
SIZE (L*W*H)	53*53*8 MM	



128	16C	R12-08S
NAME	OD26 O-RING	
MATERIAL	SILICONE	
SIZE (L*W*H)	26*26*4 MM	



129	17C	R12-07S
NAME	OD36 O-RING	
MATERIAL	SILICONE	
SIZE (L*W*H)	37*37*4 MM	



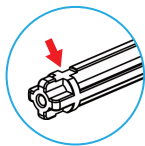
130	18C	R12-09S
NAME	OD56 O-RING	
MATERIAL	SILICONE	
SIZE (L*W*H)	56*56*4 MM	



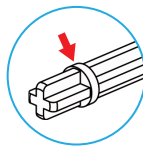
131	19C	1243-W10-A1S
NAME	GENEVA DRIVEN WHEEL	
MATERIAL	ABS	
SIZE (L*W*H)	55*55*10 MM	



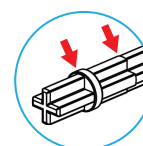
132	20C	1243-W10-A2S
NAME	GENEVA DRIVE WHEEL	
MATERIAL	ABS	
SIZE (L*W*H)	52*40*10 MM	



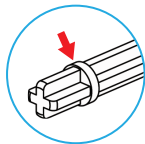
133	21C	7026-W10-L1W
NAME	MOTOR AXLE	
MATERIAL	ABS	
SIZE (L*W*H)	27*8*8 MM	



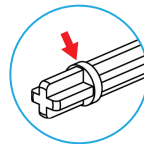
134	22C	7413-W10-N1D
NAME	30mm AXLE II	
MATERIAL	ABS	
SIZE (L*W*H)	30*8*8 MM	



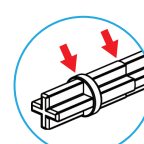
135	23C	7061-W10-A1D
NAME	30mm AXLE III	
MATERIAL	ABS	
SIZE (L*W*H)	30*8*8 MM	



136	24C	7413-W10-O1D
NAME	35mm AXLE II	
MATERIAL	ABS	
SIZE (L*W*H)	35*8*8 MM	



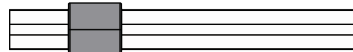
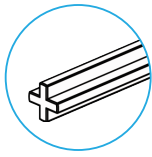
137	25C	7413-W10-M1D
NAME	60mm AXLE II	
MATERIAL	ABS	
SIZE (L*W*H)	60*8*8 MM	



138	26C	9060-W10-B1D
NAME	60mm AXLE III	
MATERIAL	ABS	
SIZE (L*W*H)	60*8*8 MM	

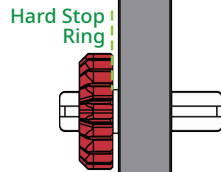
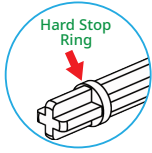
Gigo Axle

AXLE I



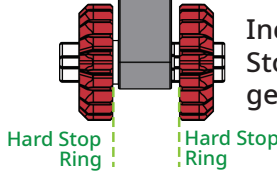
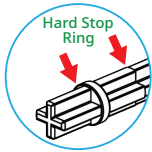
Standard Axle, no ring, no marker.

AXLE II

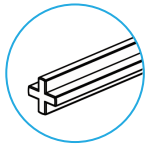


Hard Stop Ring prevents over-tightening of gears and wheels so that friction does not interfere with movement.

AXLE III

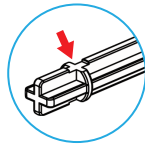


Includes Hard Stop Ring, and a secondary Soft Stop Indicator showing the optimal spacing for gears and wheels that will reduce friction.



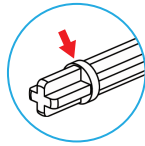
139 **27C** 7416-W10-C1D

NAME	65mm AXLE I
MATERIAL	ABS
SIZE (L*W*H)	65*8*8 MM



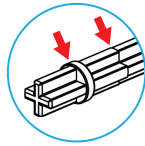
140 **28C** 7061-W10-Q2D

NAME	70mm AXLE II
MATERIAL	ABS
SIZE (L*W*H)	70*8*8 MM



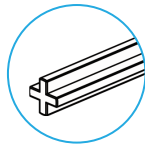
141 **29C** 7413-W10-L2D

NAME	100mm AXLE II
MATERIAL	ABS
SIZE (L*W*H)	100*8*8 MM



142 **30C** 7413-W10-L1D

NAME	100mm AXLE III
MATERIAL	ABS
SIZE (L*W*H)	100*8*8 MM



143 **31C** 7026-W10-P1D

NAME	150mm AXLE I
MATERIAL	ABS
SIZE (L*W*H)	150*8*8 MM



144 **32C** 7061-W10-S2D

NAME	DUAL AXLE END
MATERIAL	ABS
SIZE (L*W*H)	10*8*8 MM



145 **33C** M10#7061

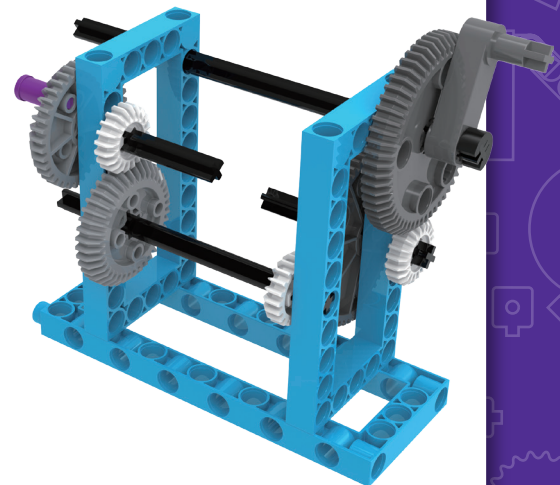
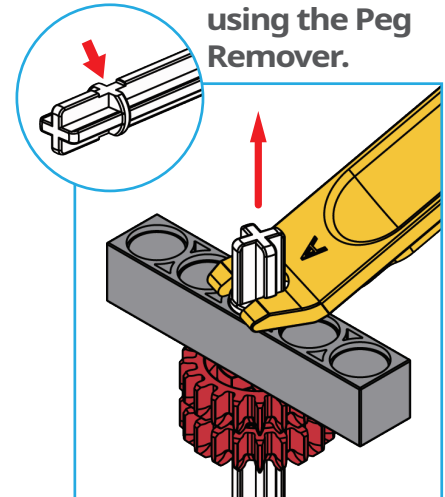
NAME	DUAL AXLE CORE
MATERIAL	STEEL PLATED
SIZE (L*W*H)	56*2*2 MM



146 **34C** 7061-W10-S3D

NAME	DUAL AXLE BODY
MATERIAL	ABS
SIZE (L*W*H)	40*8*8 MM

Pry out the axle using the Peg Remover.



COMPONENTS

Information of components useful for freeing your inner creativity

BASIC

Used for all model construction, can be easily put together with connectors to develop creativity.



147	35C	3620-W10-A1D
NAME	AXLE FIXING	
MATERIAL	TPR	
SIZE (L*W*H)	12*10*5 MM	



148	36C	7410-W10-C1S
NAME	KNUCKLE FOR AXLE	
MATERIAL	ABS	
SIZE (L*W*H)	20*10*10 MM	



149	37C	7026-W10-L2W
NAME	ROD CONNECTOR	
MATERIAL	ABS	
SIZE (L*W*H)	28*25*18 MM	



150	38C	7061-W10-Y1W
NAME	FRONT CONVERTER	
MATERIAL	ABS	
SIZE (L*W*H)	20*12*10 MM	



151	39C	7061-W10-X1W
NAME	LATERAL CONVERTER	
MATERIAL	ABS	
SIZE (L*W*H)	20*12*10 MM	



152	40C	7430-W10-B1D
NAME	1 HOLE CONNECTOR	
MATERIAL	ABS	
SIZE (L*W*H)	20*10*10 MM	



153	41C	7432-W10-B1W
NAME	HALF HEXAGON CONNECTOR	
MATERIAL	ABS	
SIZE (L*W*H)	27*10*10 MM	



154	42C	7026-W10-Q2W
NAME	3 HOLE ROD	
MATERIAL	ABS	
SIZE (L*W*H)	30*10*10 MM	



155	43C	7026-W10-X1W
NAME	3 HOLE ROD FRONT CLOSED	
MATERIAL	ABS	
SIZE (L*W*H)	30*10*10 MM	



156	44C	7413-W10-Y1W
NAME	3 HOLE DUAL ROD	
MATERIAL	ABS	
SIZE (L*W*H)	35*10*10 MM	



157	45C	7061-W10-V1W
NAME	BENDED ROD	
MATERIAL	ABS	
SIZE (L*W*H)	40*15*10 MM	



158	46C	3941-W10-C1W
NAME	BENDED ARCH ROD	
MATERIAL	ABS	
SIZE (L*W*H)	40*15*10 MM	



159	47C	7404-W10-C1W
NAME	3 HOLE ROUND ROD	
MATERIAL	ABS	
SIZE (L*W*H)	30*10*10 MM	



160	48C	7452-W10-C1SK
NAME	WEIGHT HOUSING	
MATERIAL	ABS	
SIZE (L*W*H)	50*23*21MM	



161	49C	7061-W10-T1D
NAME	50mm RACK	
MATERIAL	ABS	
SIZE (L*W*H)	55*16*10 MM	



162	50C	7413-W10-K2W
NAME	5 HOLE ROD	
MATERIAL	ABS	
SIZE (L*W*H)	50*10*10 MM	



163	51C	7413-W10-R1W
NAME	5 HOLE ROD FRONT CLOSED	
MATERIAL	ABS	
SIZE (L*W*H)	50*10*10 MM	



164	52C	7413-W10-W1W
NAME	5 HOLE DUAL ROD BOTTOM CLOSED	
MATERIAL	ABS	
SIZE (L*W*H)	55*10*10 MM	



165	53C	7413-W10-X1W
NAME	5 HOLE DUAL ROD	
MATERIAL	ABS	
SIZE (L*W*H)	55*10*10 MM	



166	54C	7443-W10-C1S
NAME	5 HOLE WIDE PROLATE ROD	
MATERIAL	ABS	
SIZE (L*W*H)	50*10*5 MM	



167	55C	7443-W10-C2S
NAME	5 HOLE WIDE PROLATE ROD FOR AXLE	
MATERIAL	ABS	
SIZE (L*W*H)	50*10*5 MM	



168	56C	7432-W10-A1W
NAME	5 HOLE FLEXIBLE ROD	
MATERIAL	PE	
SIZE (L*W*H)	90*10*5 MM	



169	57C	7406-W10-B2G
NAME	5 HOLE L SHAPE ROD	
MATERIAL	ABS	
SIZE (L*W*H)	50*20*10 MM	



170	58C	7404-W10-C2W
NAME	7 HOLE ROUND ROD	
MATERIAL	ABS	
SIZE (L*W*H)	70*10*10 MM	



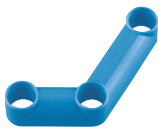
171	59C	7404-W10-C3W
NAME	7 HOLE WIDE PROLATE ROD	
MATERIAL	ABS	
SIZE (L*W*H)	70*10*5 MM	



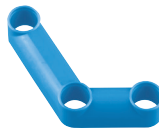
172	60C	7362-W10-D1W
NAME	7 HOLE FLAT PROLATE ROD	
MATERIAL	ABS	
SIZE (L*W*H)	72*12*3,5 MM	



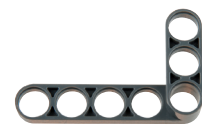
173	61C	7432-W10-A2W
NAME	7 HOLE FLEXIBLE ROD	
MATERIAL	PE	
SIZE (L*W*H)	130*10*5 MM	



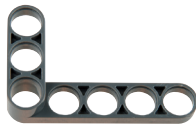
174	62C	7427-W10-C1B
NAME	7 HOLE 120° ARCH ELBOW, LEFT	
MATERIAL	ABS	
SIZE (L*W*H)	53*27*10 MM	



175	63C	7427-W10-C2B
NAME	7 HOLE 120° ARCH ELBOW, RIGHT	
MATERIAL	ABS	
SIZE (L*W*H)	53*27*10 MM	



176	64C	7066-W10-C1S
NAME	C-5X3 L-ROD, RIGHT	
MATERIAL	ABS	
SIZE (L*W*H)	50*30*30 MM	



177	65C	7066-W10-C2S
NAME	C-5X3 L-ROD, LEFT	
MATERIAL	ABS	
SIZE (L*W*H)	50*30*30 MM	



178	66C	7407-W10-C1D
NAME	9 HOLE ROD	
MATERIAL	ABS	
SIZE (L*W*H)	90*10*10 MM	



COMPONENTS

Information of components useful for freeing your inner creativity



179	67C	7427-W10-B1B
NAME	10 HOLE 60° ARCH ELBOW, LEFT	
MATERIAL	ABS	
SIZE (L*W*H)	70*27*10 MM	



180	68C	7427-W10-B2B
NAME	10 HOLE 60° ARCH ELBOW, RIGHT	
MATERIAL	ABS	
SIZE (L*W*H)	70*27*10 MM	



181	69C	7413-W10-P1W
NAME	11 HOLE ROD	
MATERIAL	ABS	
SIZE (L*W*H)	110*10*10 MM	



182	70C	7362-W10-D2S
NAME	11 HOLE FLAT PROLATE ROD	
MATERIAL	ABS	
SIZE (L*W*H)	112*12*3.5 MM	



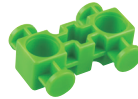
183	71C	7401-W10-A1W
NAME	13 HOLE CURVED PROLATE ROD	
MATERIAL	ABS	
SIZE (L*W*H)	153*31*5 MM	



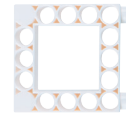
184	72C	7413-W10-Z1W
NAME	15 HOLE DUAL ROD	
MATERIAL	ABS	
SIZE (L*W*H)	155*10*10 MM	



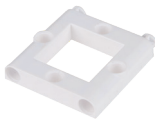
185	73C	7061-W10-T2D
NAME	150mm RACK	
MATERIAL	ABS	
SIZE (L*W*H)	155*16*10 MM	



186	74C	7406-W10-B1G
NAME	BOLT ROD WITH PINS	
MATERIAL	ABS	
SIZE (L*W*H)	30*20*10 MM	



187	75C	7413-W10-Q1W
NAME	5x5 FRAME	
MATERIAL	ABS	
SIZE (L*W*H)	55*50*10 MM	



188	76C	7411-W10-F1W
NAME	5x5 ARCH FRAME	
MATERIAL	ABS	
SIZE (L*W*H)	55*50*10 MM	



189	77C	7406-W10-A1D
NAME	3x13 DUAL FRAME	
MATERIAL	ABS	
SIZE (L*W*H)	135*30*10 MM	



190	78C	7413-W10-I1W
NAME	5x10 FRAME	
MATERIAL	ABS	
SIZE (L*W*H)	110*50*10 MM	



191	79C	7411-W10-E1W1
NAME	5x10 ARCH FRAME	
MATERIAL	ABS	
SIZE (L*W*H)	105*50*10 MM	



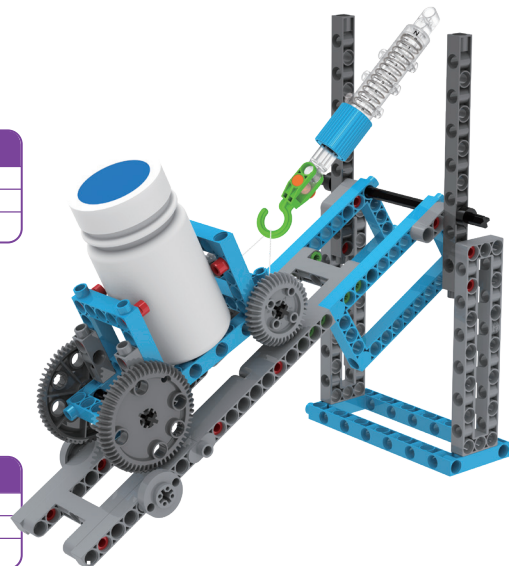
192	80C	7061-W10-U1W
NAME	5x13 DUAL FRAME	
MATERIAL	ABS	
SIZE (L*W*H)	135*50*10 MM	



193	81C	7413-W10-J1W
NAME	5x15 FRAME	
MATERIAL	ABS	
SIZE (L*W*H)	155*50*10 MM	



194	82C	7061-W10-L1SK
NAME	TRAPEZIUM FRAME	
MATERIAL	ABS	
SIZE (L*W*H)	30*30*10 MM	





195	83C	7397-W10-C1G
NAME	VIBRO LEFT LEG	
MATERIAL	ABS	
SIZE (L*W*H)	105*45*25 MM	



196	84C	7397-W10-C2G
NAME	VIBRO RIGHT LEG	
MATERIAL	ABS	
SIZE (L*W*H)	105*45*25 MM	



197	85C	7408-W10-A1Y
NAME	TRAPEZOID FRAME	
MATERIAL	ABS	
SIZE (L*W*H)	90*40*10 MM	



198	86C	7408-W10-B1Y
NAME	TRAPEZOID COVER	
MATERIAL	ABS	
SIZE (L*W*H)	90*50*40 MM	



199	87C	7411-W10-C1D
NAME	145° CRANKSHAFT GEAR -A	
MATERIAL	ABS	
SIZE (L*W*H)	92*22*10 MM	



200	88C	7411-W10-C2D
NAME	145° CRANKSHAFT GEAR -B	
MATERIAL	ABS	
SIZE (L*W*H)	92*22*10 MM	



201	89C	7411-W10-G1D
NAME	GRIPPER	
MATERIAL	TPR	
SIZE (L*W*H)	35*20*20 MM	



202	90C	7411-W10-A1S
NAME	120° CONNECTOR	
MATERIAL	ABS	
SIZE (L*W*H)	50*38*10 MM	



203	91C	7411-W10-B1S
NAME	3 WAY ADAPTER	
MATERIAL	ABS	
SIZE (L*W*H)	41.5*41.5*10 MM	



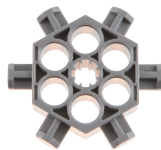
204	92C	7410-W10-A1S
NAME	ANGLE CLIP	
MATERIAL	TPR+PP	
SIZE (L*W*H)	39.3*24.7*11.5 MM	



205	93C	7410-W10-B1S
NAME	STRING FIXER	
MATERIAL	ABS	
SIZE (L*W*H)	20*10*10 MM	



206	94C	7409-W10-H1G1
NAME	3 HOLE CRANK	
MATERIAL	ABS	
SIZE (L*W*H)	30*10*20 MM	



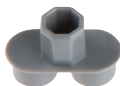
207	95C	7445-W10-A1S
NAME	6-PIN HUB CONNECTOR	
MATERIAL	ABS	
SIZE (L*W*H)	44*44*10 MM	



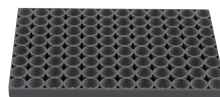
208	96C	7445-W10-B1G
NAME	CLAW PIECE A	
MATERIAL	ABS	
SIZE (L*W*H)	60*30*36 MM	



209	97C	7445-W10-B2G
NAME	CLAW PIECE B	
MATERIAL	ABS	
SIZE (L*W*H)	60*30*36 MM	



210	98C	7445-W10-D1S
NAME	TWO-IN-ONE FIXTURE	
MATERIAL	ABS	
SIZE (L*W*H)	20*10*13 MM	



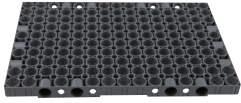
211	99C	7125-W10-A1SK
NAME	BASE GRID	
MATERIAL	ABS	
SIZE (L*W*H)	120*80*8.5 MM	



212	100C	7026-W10-I1SK
NAME	BASE GRID CONNECTOR	
MATERIAL	ABS	
SIZE (L*W*H)	20*20*6 MM	

COMPONENTS

Information of components useful for freeing your inner creativity



213	101C	7125-W10-B1S
NAME	JUMBO BASE GRID	
MATERIAL	ABS	
SIZE (L*W*H)	300*200*20 MM	



214	102C	7125-W10-C1S
NAME	JUMBO BASE GRID CONNECTOR	
MATERIAL	POM	
SIZE (L*W*H)	13.5*40*40 MM	



215	103C	7125-W10-C2S
NAME	JUMBO BASE GRID REMOVER	
MATERIAL	POM	
SIZE (L*W*H)	15*40*40 MM	



216	104C	7061-W10-C1R
NAME	LONG PEG	
MATERIAL	ABS	
SIZE (L*W*H)	13*8*8 MM	



217	105C	7413-W10-T1B
NAME	20mm AXLE CONNECTOR	
MATERIAL	ABS	
SIZE (L*W*H)	20*8*8 MM	



218	106C	1187-W10-E1K
NAME	STATIC AXLE CONNECTOR	
MATERIAL	ABS	
SIZE (L*W*H)	20*8*8 MM	



219	107C	7413-W10-U1R
NAME	30mm AXLE CONNECTOR	
MATERIAL	ABS	
SIZE (L*W*H)	30*8*8 MM	



220	108C	7026-W10-H1R
NAME	AXLE	
MATERIAL	ABS	
SIZE (L*W*H)	15*10*10 MM	



221	109C	7413-W10-S1P1
NAME	CAM CONNECTOR	
MATERIAL	PC	
SIZE (L*W*H)	20*8*8 MM	



222	110C	7061-W10-G1W
NAME	TWO-IN-ONE CONVERTER	
MATERIAL	ABS	
SIZE (L*W*H)	20*10*10 MM	



223	111C	7061-W10-W1W
NAME	SHORT BUTTON FIXER	
MATERIAL	ABS	
SIZE (L*W*H)	12*12*8 MM	



224	112C	7061-W10-W2W
NAME	LONG BUTTON FIXER	
MATERIAL	ABS	
SIZE (L*W*H)	12*12*11 MM	



225	113C	7061-W85-F1SK
NAME	HINGE	
MATERIAL	ABS	
SIZE (L*W*H)	23*10*10 MM	



226	114C	3620-W10-B1
NAME	WASHER	
MATERIAL	NYLON	
SIZE (L*W*H)	16*16*2 MM	





227	115C	7063-W10-B3S1
NAME	CRANK	
MATERIAL	ABS	
SIZE (L*W*H)	42*25*10 MM	



228	116C	7344-W10-A1W
NAME	WORM GEAR	
MATERIAL	ABS	
SIZE (L*W*H)	21*21*28 MM	



229	117C	7063-W10-A1S1
NAME	EGG CAM	
MATERIAL	ABS	
SIZE (L*W*H)	43*33*10 MM	



230	118C	7063-W10-A2S1
NAME	SNAIL CAM	
MATERIAL	ABS	
SIZE (L*W*H)	70*60*10 MM	



231	119C	880-W25-Q1
NAME	WHEEL	
MATERIAL	ABS	
SIZE (L*W*H)	44*44*8 MM	



232	120C	7362-W25-F1
NAME	THICK WHEEL	
MATERIAL	ABS	
SIZE (L*W*H)	56*56*22 MM	



233	121C	7392-W10-H1SK
NAME	TURBO WHEEL	
MATERIAL	ABS	
SIZE (L*W*H)	64*64*25 MM	



234	122C	1115-W85-F2S
NAME	RACING TIRE	
MATERIAL	ABS/TPR	
SIZE (L*W*H)	70*70*13 MM	



235	123C	7407-W10-B1W
NAME	TURBO TIRE RIM	
MATERIAL	ABS	
SIZE (L*W*H)	50*50*30 MM	



236	124C	7407-W10-A1D
NAME	TURBO TIRE	
MATERIAL	TPR	
SIZE (L*W*H)	60*60*25 MM	



237	125C	7408-W10-C1D
NAME	TRUCK TIRE	
MATERIAL	TPR	
SIZE (L*W*H)	80*80*30 MM	



238	126C	7446-W10-B1O
NAME	40T WHEEL FRAME	
MATERIAL	ABS	
SIZE (L*W*H)	42*42*30 MM	



239	127C	7444-W10-A1D
NAME	60T WHEEL FRAME	
MATERIAL	ABS	
SIZE (L*W*H)	62*62*30 MM	



COMPONENTS

Information of components useful for freeing your inner creativity



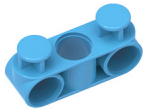
240	128C	7446-W10-C1D
NAME	20T BELT	
MATERIAL	TPR	
SIZE (L*W*H)	150*20*12 MM	



241	129C	7446-W10-C2D
NAME	21T BELT	
MATERIAL	TPR	
SIZE (L*W*H)	155*20*12 MM	



242	130C	7404-W10-D1TB
NAME	1 HOLE CONNECTOR	
MATERIAL	PC	
SIZE (L*W*H)	20*10*10 MM	



243	131C	7404-W10-B1B
NAME	3 HOLE DUAL ROUND ROD WITH PEGS	
MATERIAL	ABS	
SIZE (L*W*H)	30*15*10 MM	



244	132C	7404-W10-B2D
NAME	TRIANGLE CONNECTOR	
MATERIAL	ABS	
SIZE (L*W*H)	40*32*10 MM	



245	133C	7026-W10-J2R
NAME	BAR	
MATERIAL	ABS	
SIZE (L*W*H)	38*8*8 MM	



246	134C	7404-W10-G10
NAME	TUBE BOLT	
MATERIAL	PP	
SIZE (L*W*H)	10*8*20 MM	



247	135C	7404-W10-G20
NAME	TUBE BOLT CAP	
MATERIAL	PP	
SIZE (L*W*H)	8*8*5 MM	



248	136C	7428-W85-A
NAME	SPRING SCALE	
MATERIAL	ABS	
SIZE (L*W*H)	155*25.8*25.8 MM	



249	137C	7428-W10-A1G
NAME	SPRING SCALE HOOK	
MATERIAL	ABS	
SIZE (L*W*H)	57*20*25 MM	



250	138C	7900-W10-H2SK
NAME	HOOK	
MATERIAL	ABS	
SIZE (L*W*H)	38*20*7 MM	



251	139C	7900-W10-H1SK
NAME	ROLLER	
MATERIAL	ABS	
SIZE (L*W*H)	22*16*16 MM	



252	140C	7400-W10-G2D
NAME	OD8x20mm TUBE	
MATERIAL	POM	
SIZE (L*W*H)	20*8*8 MM	



253	141C	7400-W10-G1D
NAME	OD8x30mm TUBE	
MATERIAL	POM	
SIZE (L*W*H)	30*8*8 MM	



254	142C	7066-W10-A1S
NAME	30mm STATIC CONNECTOR TUBE	
MATERIAL	POM	
SIZE (L*W*H)	30*8*8 MM	



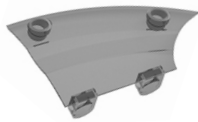
255	143C	7337-W16-A1D
NAME	OD8x80mm TUBE	
MATERIAL	ABS	
SIZE (L*W*H)	80*8*8 MM	



256	144C	7366-W16-E1
NAME	OD18x150mm TUBE	
MATERIAL	ABS	
SIZE (L*W*H)	18*18*150 MM	



257	145C	7392-W10-L1TD
NAME	SHELL A LEFT	
MATERIAL	PC	
SIZE (L*W*H)	50*77*12 MM	



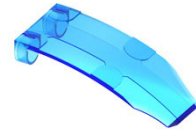
258 **146C** 7392-W10-L2TD

NAME	SHELL A RIGHT
MATERIAL	PC
SIZE (L*W*H)	50*77*12 MM



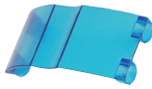
259 **147C** 7392-W10-M10

NAME	SHELL C
MATERIAL	PC
SIZE (L*W*H)	50*20*17 MM



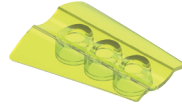
260 **148C** 7398-W10-C2B

NAME	SHELL E
MATERIAL	PC
SIZE (L*W*H)	85*40*35 MM



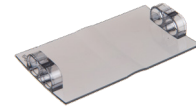
261 **149C** 7398-W10-C1B

NAME	SHELL F
MATERIAL	PC
SIZE (L*W*H)	58*30*18 MM



262 **150C** 7397-W10-B1G

NAME	SHELL H
MATERIAL	PC
SIZE (L*W*H)	40*30*7 MM



263 **151C** 7407-W10-D1TD

NAME	SHELL J
MATERIAL	PC
SIZE (L*W*H)	70*40*10 MM



264 **152C** 7427-W10-F2B

NAME	HEXAGONAL BODY PLATE 1
MATERIAL	ABS
SIZE (L*W*H)	70*70*20 MM



265 **153C** 7427-W10-F1P

NAME	HEXAGONAL BODY PLATE 2
MATERIAL	ABS
SIZE (L*W*H)	70*50*20 MM



266 **154C** 7443-W10-B1S

NAME	HELICOPTER BLADE
MATERIAL	ABS
SIZE (L*W*H)	140*25*8 MM



7396-W10-H3S

+



7396-W10-H2S

+



7396-W10-H1S

+



7396-W10-H2S

+



7396-W10-H3S

=



267 **155C** 7396-W10-H3S / 7396-W10-H2S / 7396-W10-H1S

NAME	HAND A
MATERIAL	ABS
SIZE (L*W*H)	23*18*10 MM



268 **156C** 7443-W10-A1R

NAME	LARGE BODY PIECE B
MATERIAL	ABS
SIZE (L*W*H)	55*70*20 MM



269 **157C** 7445-W10-C1G

NAME	MAIN BODY PIECE
MATERIAL	ABS
SIZE (L*W*H)	92*70*20 MM



COMPONENTS

Information of components useful for freeing your inner creativity



270	158C	7446-W10-A1R
NAME	LARGE BODY PIECE A	
MATERIAL	ABS	
SIZE (L*W*H)	110*78*10 MM	



271	159C	7446-W10-A2R
NAME	SMALL BODY PIECE LEFT	
MATERIAL	ABS	
SIZE (L*W*H)	40*60*16 MM	



272	160C	7446-W10-A3R
NAME	SMALL BODY PIECE RIGHT	
MATERIAL	ABS	
SIZE (L*W*H)	40*60*16 MM	



273	161C	7398-W10-D1W
NAME	OD106 PROPELLER	
MATERIAL	ABS	
SIZE (L*W*H)	106*106*20 MM	



274	162C	1156-W10-G1Y
NAME	HOE	
MATERIAL	ABS	
SIZE (L*W*H)	105*45*40 MM	



275	163C	7362-W25-K1
NAME	SUN COLLECTOR	
MATERIAL	PS	
SIZE (L*W*H)	216*175*6 MM	



276	164C	R10-02
NAME	70mm RUBBER BAND	
MATERIAL	RUBBER	
SIZE (L*W*H)	Ø70*1.5 MM	



277	165C	R10-05
NAME	100mm RUBBER BAND	
MATERIAL	RUBBER	
SIZE (L*W*H)	Ø100*1.5 MM	



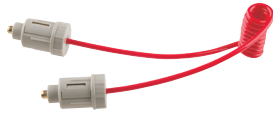
278	166C	R10-28
NAME	200mm RUBBER BAND	
MATERIAL	RUBBER	
SIZE (L*W*H)	Ø200*1.5 MM	



279	167C	7406-W85-A
NAME	CROSSBOW BOLT	
MATERIAL	TPR/ABS	
SIZE (L*W*H)	175*25*25 MM	



ELECTRICITY



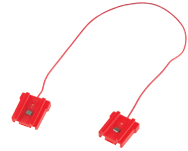
280 **168C** 7050-W85-5R

NAME	WIRE CONNECTOR
MATERIAL	ABS/BDS
SIZE (L*W*H)	240*15*15 MM



281 **169C** 7050-W85-5DC

NAME	WIRE CLIP
MATERIAL	ABS/BDS
SIZE (L*W*H)	240*15*15 MM



282 **170C** 7455-W85-A1R

NAME	WIRE
MATERIAL	ABS
SIZE (L*W*H)	290*20*20MM



283 **171C** 7455-W85-A1D

NAME	WIRE
MATERIAL	ABS
SIZE (L*W*H)	290*20*20MM



284 **172C** 7050-W85-2G

NAME	SWITCH
MATERIAL	ABS/BDS
SIZE (L*W*H)	40*20*20 MM



285 **173C** 7455-W85-C

NAME	SWITCH
MATERIAL	ABS
SIZE (L*W*H)	50*20*16MM



286 **174C** 7050-W85-3R

NAME	CUBE CONDUCTOR
MATERIAL	ABS/BDS
SIZE (L*W*H)	25*20*20 MM



287 **175C** 7344-W85-C1R

NAME	PEG CONDUCTOR
MATERIAL	ABS/METAL
SIZE (L*W*H)	18*8*8 MM



288 **176C** 7050-W85-6G

NAME	BULB HOLDER
MATERIAL	ACRYLIC/ABS
SIZE (L*W*H)	50*20*20 MM



289 **177C** 7050-W85-6RL

NAME	LED HOLDER
MATERIAL	ACRYLIC/ABS
SIZE (L*W*H)	50*20*20 MM



290 **178C** E40-04

NAME	LED
MATERIAL	EPOXY/SPCC
SIZE (L*W*H)	36*6*6 MM



291 **179C** 7065-W85-A

NAME	ROUND MAGNET
MATERIAL	ABS+MAGNET
SIZE (L*W*H)	22*22*7 MM



292 **180C** M10#7343

NAME	IRON ROD
MATERIAL	METAL
SIZE (L*W*H)	18*18*18 MM



COMPONENTS

Information of components useful for freeing your inner creativity



293	181C	7343-W10-A1SK
NAME	WINDING REEL	
MATERIAL	ABS	
SIZE (L*W*H)	20*20*20 MM	



294	182C	7344-W85-B2
NAME	PLASTIC SHEATH WIRE	
MATERIAL	METAL	
SIZE (L*W*H)	0.3*0.3*400 MM	



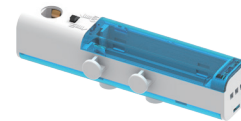
295	183C	1206-W85-A
NAME	C-Gigo AI CONTROL BOX	
MATERIAL	PC/ABS	
SIZE (L*W*H)	110*70*23 MM	



296	184C	1206-W85-B
NAME	1.5V DUAL BATTERY BOX	
MATERIAL	PC/ABS	
SIZE (L*W*H)	100*28*31 MM	



297	185C	7079-W10-B3TB
NAME	C-BATTERY BOX OPENER	
MATERIAL	PC	
SIZE (L*W*H)	30*30*7 MM	



298	186C	7079-W85-A
NAME	C-1.5V DUAL BATTERY BOX II	
MATERIAL	PC	
SIZE (L*W*H)	90*20*25 MM	

7050-W85-O2



+

7455-W10-C1Y



=



299	187C	7050-W85-O2 / 7455-W10-C1Y
NAME	1.5V BATTERY HOLDER II	
MATERIAL	ABS	
SIZE (L*W*H)	80*25*20 MM	

7363-W85-I1

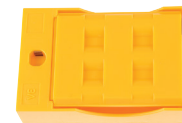


+

7363-W10-H3Y

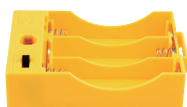


=



300	188C	7363-W85-I1 / 7363-W10-H3Y
NAME	C-3V BATTERY HOLDER II	
MATERIAL	ABS	
SIZE (L*W*H)	74*25*35 MM	

7363-W85-H1

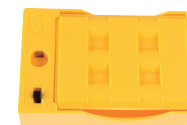


+

7363-W10-H3Y



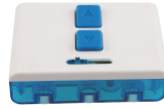
=



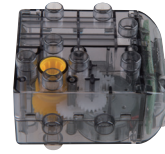
301	189C	7363-W85-H1 / 7363-W10-H3Y
NAME	C-4.5V BATTERY HOLDER WITH SWITCHII	
MATERIAL	ABS	
SIZE (L*W*H)	73*49*25 MM	



302	190C	7050-W85-O1
NAME	1.5V BATTERY HOLDER WITH FUSE	
MATERIAL	ABS	
SIZE (L*W*H)	80*25*20MM	



303	191C	7336-W85-A1
NAME	IR REMOTE CONTROLLER	
MATERIAL	PC/ABS/SILICONE	
SIZE (L*W*H)	65*50*23MM	



304	192C	7336-W85-B1
NAME	IR RECEIVER/MOTOR	
MATERIAL	PC/POM	
SIZE (L*W*H)	50*60*39 MM	



305	193C	7416-W85-G
NAME	ULTRASONIC BT RECEIVER (DDM)	
MATERIAL	PC/ABS	
SIZE (L*W*H)	90*60*20 MM	



306	194C	1246-W85-A2
NAME	4.5V BT RECEIVER (DDM)	
MATERIAL	ABS/PC	
SIZE (L*W*H)	90*60*20 MM	



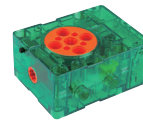
307	195C	7452-W85-A
NAME	CLAPPING RECEIVER	
MATERIAL	PC/ABS	
SIZE (L*W*H)	90*60*20 MM	



308	196C	7050-W85-1S
NAME	MOTOR WITH SPINDLE GEAR	
MATERIAL	ABS	
SIZE (L*W*H)	58*50*30 MM	



309	197C	7441-W85-A
NAME	28X MOTOR WITH SWITCH	
MATERIAL	PC/POM	
SIZE (L*W*H)	99*59*30 MM	



310	198C	7409-W85-A
NAME	3 WAY MOTOR	
MATERIAL	PC/POM	
SIZE (L*W*H)	65*60*30 MM	



311	199C	1155-W85-R
NAME	AIR-WATER POWER PACKII	
MATERIAL	ABS	
SIZE (L*W*H)	78*60*65 MM	



312	200C	7328-W85-A1-1
NAME	30X MOTOR WITH WIRE CONNECTOR	
MATERIAL	PC	
SIZE (L*W*H)	50*40*30 MM	



313	201C	7400-W85-A
NAME	40X MOTOR WITH WIRE CONNECTOR	
MATERIAL	PC/POM	
SIZE (L*W*H)	50*40*35 MM	



314	202C	7400-W85-A1
NAME	40X MOTOR WITH WIRE CONNECTOR (DDM)	
MATERIAL	PC/POM	
SIZE (L*W*H)	50*40*35 MM	



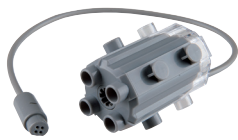
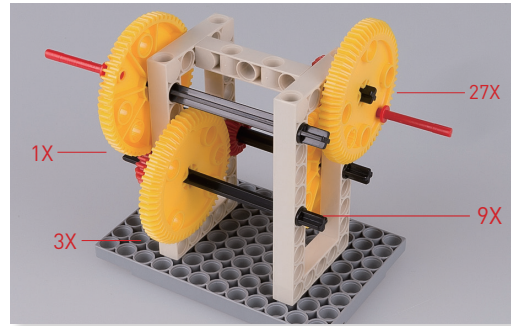
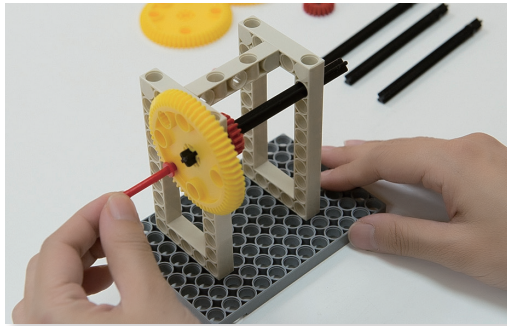
315	203C	7366-W85-C
NAME	MOTOR WITH WIRE CONNECTOR	
MATERIAL	ABS	
SIZE (L*W*H)	67*39*39 MM	



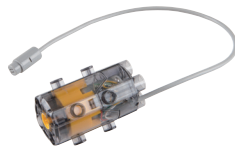
316	204C	7366-W85-A
NAME	BLOWER	
MATERIAL	ABS	
SIZE (L*W*H)	79*79*29.5 MM	

COMPONENTS Information of components useful for freeing your inner creativity

Gigo 3 FOUNDATIONS-2



317	205C	7392-W85-B3
NAME	32X PLANETARY GEARBOX (DDM)	
MATERIAL	PC/ABS	
SIZE (L*W*H)	50*39*39 MM	



318	206C	7412-W85-A
NAME	50X PLANETARY GEARBOX (DDM)	
MATERIAL	PC/POM	
SIZE (L*W*H)	40*40*60 MM	



319	207C	1114-W85-E1K
NAME	16X MOTOR	
MATERIAL	PC	
SIZE (L*W*H)	70*50*36 MM	



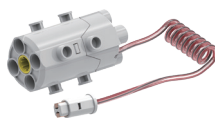
320	208C	7430-W85-A
NAME	WATER REPELLENT MOTOR	
MATERIAL	ABS/POM	
SIZE (L*W*H)	110*80*50 MM	



321	209C	7416-W85-B
NAME	ULTRASONIC SENSOR	
MATERIAL	ABS	
SIZE (L*W*H)	55*57*32 MM	



322	210C	7072-W85-A
NAME	ROBOTIC BASE UNIT	
MATERIAL	ABS/POM	
SIZE (L*W*H)	116*100*39 MM	



323	211C	7447-W85-C1
NAME	C-50X PLANETARY GEARBOX II	
MATERIAL	PC/POM	
SIZE (L*W*H)	40*40*60 MM	



324	212C	E10#7455
NAME	MOTOR	
MATERIAL	ABS	
SIZE (L*W*H)	70*23*37MM	



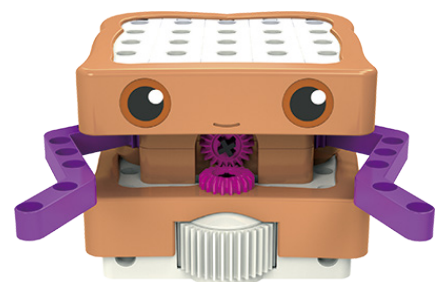
325	213C	7448-W10-B3TY
NAME	TT MOTOR HOUSING	
MATERIAL	PC	
SIZE (L*W*H)	40*30*20 MM	



326	214C	7448-W10-B1TY
NAME	MOTOR AXLE	
MATERIAL	PC	
SIZE (L*W*H)	25*8*8 MM	



327	215C	7455-W10-B3D
NAME	MOTOR CONTACT COVER	
MATERIAL	ABS	
SIZE (L*W*H)	30*28*23.3MM	





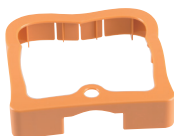
328	216C	7442-W10-F1T1
NAME	SAMMY'S GEARBOX, TOP	
MATERIAL	ABS	
SIZE (L*W*H)	100*70*15 MM	



329	217C	7442-W10-F2T1
NAME	SAMMY'S GEARBOX, BOTTOM	
MATERIAL	ABS	
SIZE (L*W*H)	100*70*15 MM	



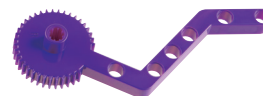
330	218C	7442-W10-G1T1
NAME	SAMMY'S CRUST, TOP	
MATERIAL	ABS	
SIZE (L*W*H)	117*115*25 MM	



331	219C	7442-W10-G2T1
NAME	SAMMY'S CRUST, BOTTOM	
MATERIAL	ABS	
SIZE (L*W*H)	117*115*25 MM	



332	220C	7442-W10-H1P
NAME	SAMMY'S ARM, LEFT	
MATERIAL	ABS	
SIZE (L*W*H)	135*60*30 MM	



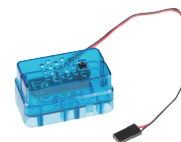
333	221C	7442-W10-H2P
NAME	SAMMY'S ARM, RIGHT	
MATERIAL	ABS	
SIZE (L*W*H)	135*60*30 MM	



334	222C	1269-W85-A1
NAME	Gigo micro:bit CONTROL BOX	
MATERIAL	PC/ABS	
SIZE (L*W*H)	100*70*42 MM	



335	223C	1269-W85-B1R
NAME	LED HOLDER (4-PIN)	
MATERIAL	ACRYLIC/ABS	
SIZE (L*W*H)	20*20*40 MM	



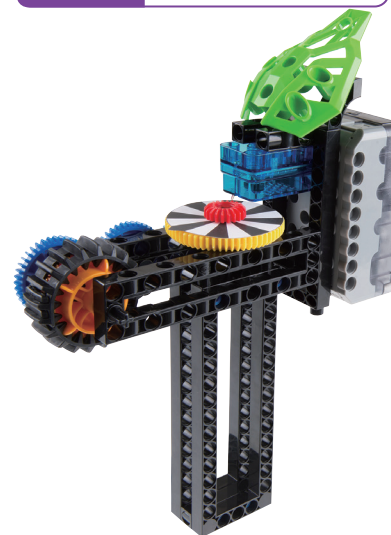
336	224C	1247-W85-B3
NAME	LINE FOLLOWER SENSOR	
MATERIAL	PC	
SIZE (L*W*H)	50*30*25 MM	



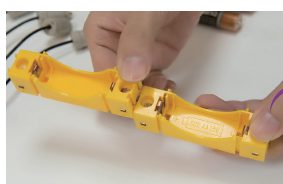
337	225C	1247-W85-D3
NAME	180° SERVO MOTOR (METAL GEAR)	
MATERIAL	PC/ABS	
SIZE (L*W*H)	42*40*37 MM	



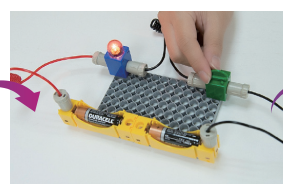
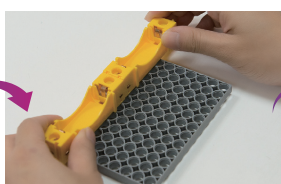
338	226C	7452-W85-B
NAME	SOUND SENSOR	
MATERIAL	ABS	
SIZE (L*W*H)	30*30*50 MM	



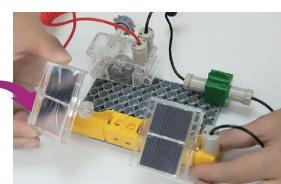
Gigo 3 FOUNDATIONS-3



Connecting battery holders in series.



Turn on switch; light it up!



Compatible with 1.5V solar panel.

COMPONENTS

Information of components useful for freeing your inner creativity

SMART BRICKS #1246R/1203



339	227C	1246-W85-A1
NAME	Gigo SMART CONTROL BOX	
MATERIAL	PC/ABS	
SIZE (L*W*H)	100*70*40 MM	



340	228C	1246-W85-B
NAME	ILLUMINANCE SENSOR	
MATERIAL	PC/ABS	
SIZE (L*W*H)	30*30*50 MM	



341	229C	1246-W85-C
NAME	FORCE SENSOR	
MATERIAL	PC/ABS	
SIZE (L*W*H)	30*30*60 MM	



342	230C	1246-W85-D
NAME	EXTENSION CORD	
MATERIAL	ABS	
SIZE (L*W*H)	330*10*10 MM	



SMART BRICKS #1247R/1204



343	231C	1204RR-W85-A1
NAME	Gigo MAKER CONTROL BOX	
MATERIAL	PC	
SIZE (L*W*H)	100*70*35 MM	



344	232C	1247-W85-B1
NAME	IR SENSOR	
MATERIAL	PC	
SIZE (L*W*H)	50*30*25 MM	



345	233C	1247-W85-B2
NAME	LIGHT SENSOR	
MATERIAL	PC	
SIZE (L*W*H)	50*30*25 MM	



346	234C	1247-W85-C1S
NAME	BALL ROLLER	
MATERIAL	ABS/METAL	
SIZE (L*W*H)	30*16.5*20 MM	



347	235C	1247-W85-D1-1
NAME	180° SERVO MOTOR	
MATERIAL	PC/ABS	
SIZE (L*W*H)	42*40*37 MM	



348	236C	1247-W85-D2
NAME	CONTINUOUS ROTATION SERVO MOTOR	
MATERIAL	PC/ABS	
SIZE (L*W*H)	60*39*55 MM	



349	237C	1247-W85-E1
NAME	BT MODULE	
MATERIAL	PCBA	
SIZE (L*W*H)	37.5*16.5*12.5 MM	



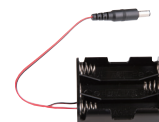
1247-W10-F1W

+



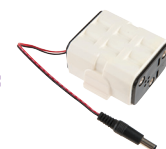
1247-W10-F2W

+



R34-10

=



350	238C	1247-W10-F1W / 1247-W10-F2W / R34-10
NAME	C-9V BATTERY HOLDER	
MATERIAL	ABS	
SIZE (L*W*H)	62*40*60 MM	

ROBOTICS WORKSHOP micro:bit VERSION #1409/1409-A



351 **239C** 1409-W10-F1

NAME	CABLE FIXER
MATERIAL	ABS
SIZE (L*W*H)	10*10*7.8MM



352 **240C** 1409-W10-G1

NAME	UNIVERSAL CONVERTER
MATERIAL	ABS
SIZE (L*W*H)	20*15*10MM



353 **241C** 1409-W85-A

NAME	micro:bit CONTROL BOX
MATERIAL	ABS
SIZE (L*W*H)	90*70*40MM



354 **242C** 1409-W85-B

NAME	ULTRASONIC RANGING SENSOR
MATERIAL	ABS
SIZE (L*W*H)	50*30*30MM



355 **243C** 1409-W85-C

NAME	RGB LED HOLDER
MATERIAL	ABS
SIZE (L*W*H)	30*30*20MM



356 **244C** 1409-W85-D

NAME	IR SENSOR
MATERIAL	ABS
SIZE (L*W*H)	50*30*20MM



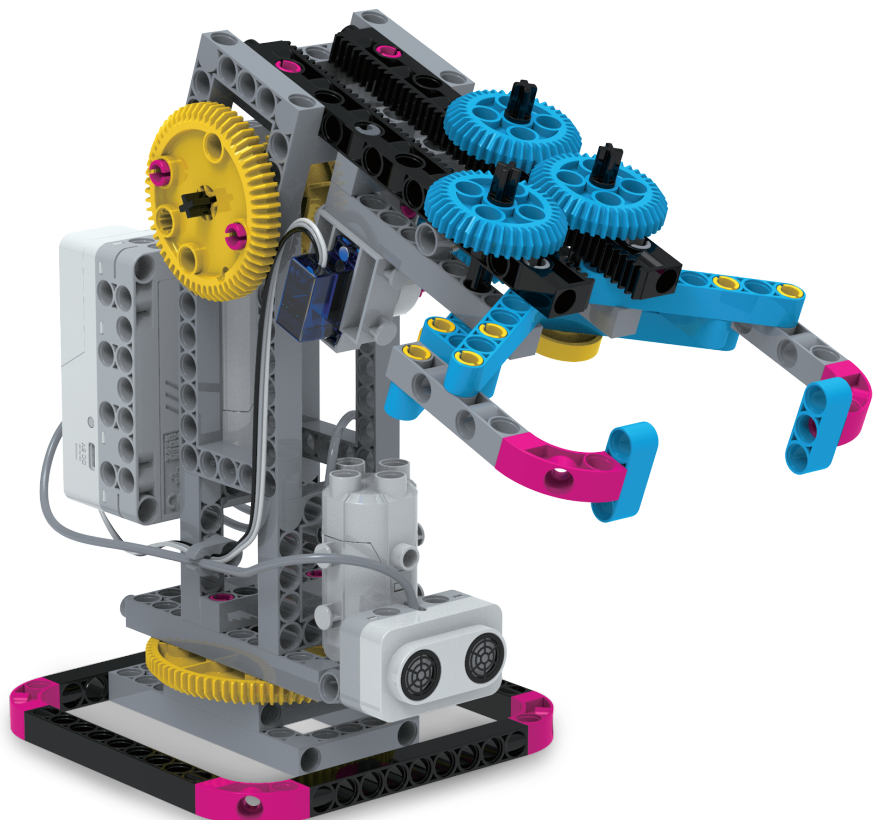
357 **245C** 1409-W85-E

NAME	TURN-AND-PRESS FORCE SENSOR
MATERIAL	ABS
SIZE (L*W*H)	30*30*30MM



358 **246C** 1409-W85-F

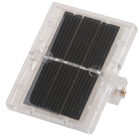
NAME	COLOR SENSOR
MATERIAL	ABS
SIZE (L*W*H)	50*30*20MM



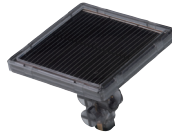
COMPONENTS

Information of components useful for freeing your inner creativity

GREEN ENGERY



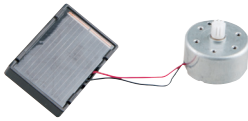
359	247C	1170-W85-A1
NAME	1.5V MOVABLE SOLAR PANEL	
MATERIAL	PC	
SIZE (L*W*H)	60*51*26 MM	



360	248C	7346-W85-A
NAME	3V SOLAR PANEL	
MATERIAL	PC	
SIZE (L*W*H)	50*50*42 MM	



361	249C	1114-W85-A1
NAME	1.5V SOLAR POWER PACK	
MATERIAL	PC	
SIZE (L*W*H)	70*50*36 MM	



362	250C	7422-W85-A
NAME	1V SOLAR CELL AND MOTOR SET	
MATERIAL	ABS	
SIZE (L*W*H)	43*26*9.5 MM	



363	251C	7422-W10-C2D
NAME	MOTOR HOUSING	
MATERIAL	ABS	
SIZE (L*W*H)	40*25*30 MM	



364	252C	7363-W85-E1
NAME	METAL AIR FUEL CELL	
MATERIAL	ABS	
SIZE (L*W*H)	78*60*20 MM	



365	253C	M31#7363-2
NAME	MG ALLOY	
MATERIAL	METAL	
SIZE (L*W*H)	41*30*0.5 MM	



366	254C	1155-W85-1200
NAME	1200mm TUBE B	
MATERIAL	TPE	
SIZE (L*W*H)	5*5*1200 MM	



367	255C	1155-W85-200
NAME	2000mm TUBE A	
MATERIAL	TPE	
SIZE (L*W*H)	6*6*2000 MM	



368	256C	7409-W85-2000
NAME	2000mm TUBE A	
MATERIAL	TPE	
SIZE (L*W*H)	5*5*2000 MM	





369	257C	1156-W10-J1Y
NAME	S SECURITY NUT	
MATERIAL	ABS	
SIZE (L*W*H)	9*9*8 MM	



370	258C	1156-W10-N1Y
NAME	L SECURITY NUT	
MATERIAL	ABS	
SIZE (L*W*H)	11*11*9 MM	



371	259C	7438-W10-A1D
NAME	VALVE CONTROLLER	
MATERIAL	PC	
SIZE (L*W*H)	13*13*23 MM	



372	260C	7438-W10-A2D
NAME	VALVE	
MATERIAL	PC	
SIZE (L*W*H)	10*24*45 MM	



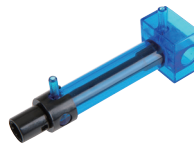
373	261C	7344-W10-C3Y
NAME	SHORT PEG WITH HOLE	
MATERIAL	ABS	
SIZE (L*W*H)	10*8*8 MM	



374	262C	1156-W85-D1G
NAME	SHORT CYLINDER	
MATERIAL	ABS/PP	
SIZE (L*W*H)	30*20*69 MM	



375	263C	1156-W85-C1G
NAME	LONG CYLINDER	
MATERIAL	ABS/PP	
SIZE (L*W*H)	30*20*84 MM	



376	264C	7411-W85-A
NAME	PNEUMATIC PISTON CYLINDER	
MATERIAL	ABS	
SIZE (L*W*H)	20*20*95 MM	



377	265C	7411-W10-D3D
NAME	PNEUMATIC PISTON HANDLE	
MATERIAL	ABS	
SIZE (L*W*H)	30*10*10 MM	



378	266C	1155-W85-I3DN
NAME	SECURED ONE-WAY SWITCH	
MATERIAL	PC	
SIZE (L*W*H)	31*38*61 MM	



379	267C	1155-W85-I4DN
NAME	SECURED REVERSE SWITCH	
MATERIAL	PC	
SIZE (L*W*H)	31*38*61 MM	



380	268C	1155-W85-C1G
NAME	RECYCLED WATER STORAGE	
MATERIAL	ABS	
SIZE (L*W*H)	80*80*95 MM	



381	269C	7362-W85-J1
NAME	BUOYANCY BOTTLE WITH LID	
MATERIAL	PET	
SIZE (L*W*H)	60*60*173 MM	



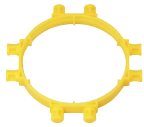
382	270C	1155-W85-B2GN
NAME	SECURED AIR-WATER STORAGE	
MATERIAL	ABS/PET	
SIZE (L*W*H)	75*50*190 MM	



283	271C	R12-05
NAME	OD15.8 FLAT O RING	
MATERIAL	SILICONE	
SIZE (L*W*H)	15*15.8*2 MM	

COMPONENTS

Information of components useful for freeing your inner creativity



384	272C	7362-W10-G1Y
NAME	8 PIN ROUND FRAME FOR BOTTLE	
MATERIAL	ABS	
SIZE (L*W*H)	85*85*10 MM	



385	273C	1155-W85-D2GN
NAME	SECURED PUMP	
MATERIAL	ABS	
SIZE (L*W*H)	47*30*159 MM	



386	274C	7389-W85-A1D
NAME	LITTLE AIR WATER SET	
MATERIAL	ABS	
SIZE (L*W*H)	193*80*87 MM	



387	275C	7389-W10-B2D
NAME	FRONT FIXING RIM	
MATERIAL	ABS	
SIZE (L*W*H)	87*80*12 MM	



388	276C	7389-W85-B1R
NAME	RELEASE CLIP	
MATERIAL	PP	
SIZE (L*W*H)	56*42*16 MM	



389	277C	7323-W10-B1Y
NAME	STORAGE CAP	
MATERIAL	ABS	
SIZE (L*W*H)	50*50*15 MM	



390	278C	7323-W85-C1Y
NAME	NOZZLE A	
MATERIAL	PC	
SIZE (L*W*H)	26*26*31 MM	



391	279C	7323-W85-D1W
NAME	CAR LAUNCHER	
MATERIAL	ABS	
SIZE (L*W*H)	85*50*35 MM	



392	280C	3695-W10-A1B
NAME	PADDLE WHEEL-PADDLE	
MATERIAL	ABS	
SIZE (L*W*H)	70*70*30 MM	



393	281C	7366-W85-B
NAME	EVA PROPELLER	
MATERIAL	ABS/EVA	
SIZE (L*W*H)	68*68*16 MM	



394	282C	7324-W10-C1B
NAME	SHORT BLADE	
MATERIAL	PP	
SIZE (L*W*H)	165*57*12 MM	

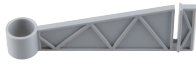


395	283C	7324-W10-A1W
NAME	LONG BLADE	
MATERIAL	ABS	
SIZE (L*W*H)	415*65*20 MM	



396	284C	7430-W10-G1W
NAME	WIND TURBINE BLADE	
MATERIAL	ABS	
SIZE (L*W*H)	365*60*33 MM	





397 **285C** 7430-W10-H1S

NAME	TENT STAKE FIXER
MATERIAL	ABS
SIZE (L*W*H)	133*40*22 MM



398 **286C** 7324-W10-B1W

NAME	ROUND HUB
MATERIAL	ABS
SIZE (L*W*H)	71*71*40 MM



399 **287C** 3680-W85-A2R

NAME	UNIVERSAL ADAPTER
MATERIAL	ABS
SIZE (L*W*H)	55*50*1.5/75*75*25 MM



400 **288C** 7400-W10-B1W

NAME	HUB
MATERIAL	ABS
SIZE (L*W*H)	75*75*72 MM



401 **289C** 7400-W10-B2W

NAME	ADAPTER
MATERIAL	ABS
SIZE (L*W*H)	64*64*40 MM



402 **290C** 7324-W10-E1SK

NAME	TUBE ADAPTER
MATERIAL	ABS
SIZE (L*W*H)	50*50*43 MM

AIR POWER



403 **291C** 7366-W10-D4Y

NAME	FILTER COVER
MATERIAL	ABS
SIZE (L*W*H)	24*24*10 MM



404 **292C** 7366-W10-E1Y

NAME	ELBOW PIPE
MATERIAL	ABS
SIZE (L*W*H)	44*22*28 MM



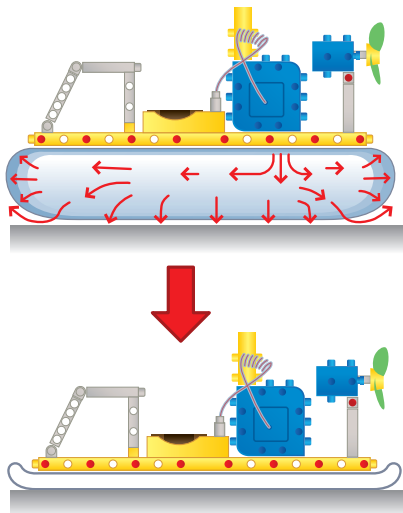
405 **293C** 7366-W10-E2Y

NAME	TUBE CONNECTOR
MATERIAL	ABS
SIZE (L*W*H)	50*22*39 MM



406 **294C** 7366-W10-D6Y

NAME	COUPLING FLANGE FOR VACUUM
MATERIAL	ABS
SIZE (L*W*H)	50*40*40 MM

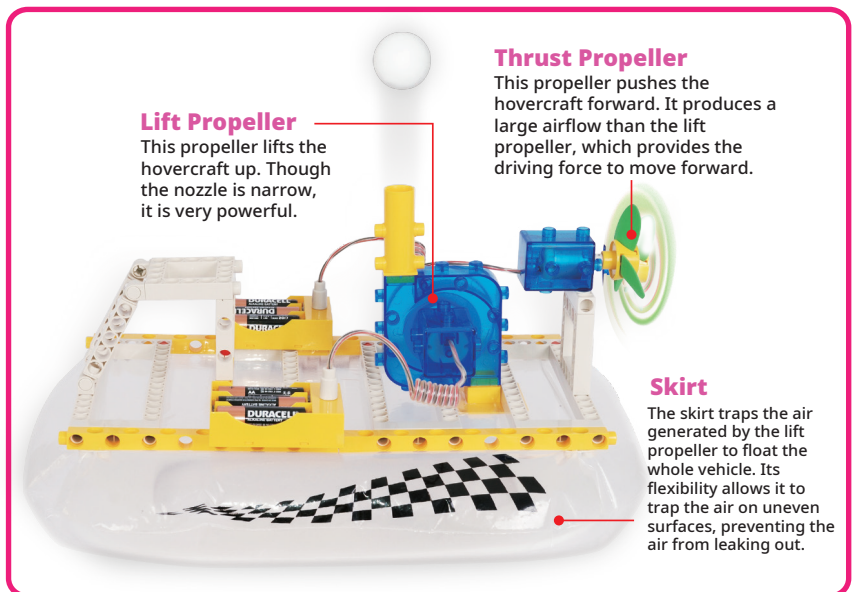


Lift Propeller

This propeller lifts the hovercraft up. Though the nozzle is narrow, it is very powerful.

Thrust Propeller

This propeller pushes the hovercraft forward. It produces a large airflow than the lift propeller, which provides the driving force to move forward.



Skirt

The skirt traps the air generated by the lift propeller to float the whole vehicle. Its flexibility allows it to trap the air on uneven surfaces, preventing the air from leaking out.

COMPONENTS

Information of components useful for freeing your inner creativity



407	295C	7366-W10-D3Y
NAME	TUBE COVER	
MATERIAL	ABS	
SIZE (L*W*H)	21*21*6.5 MM	



408	296C	7366-W10-B5Y
NAME	BLOWER PIPE	
MATERIAL	ABS	
SIZE (L*W*H)	55*20*29 MM	



409	297C	7366-W10-B4Y
NAME	AIR INTAKE COVER FOR THE BLOWER	
MATERIAL	ABS	
SIZE (L*W*H)	20*20*7 MM	



410	298C	7366-W10-D2Y
NAME	TOP BODY COVER FOR THE VACUUM CLEANER	
MATERIAL	ABS	
SIZE (L*W*H)	66.8*66.8*30 MM	



411	299C	7366-W10-B3Y
NAME	SQUARE OUTLET FOR THE BLOWER	
MATERIAL	ABS	
SIZE (L*W*H)	50*50*21 MM	



412	300C	K22-04
NAME	PLASTIC CUSHION SET	
MATERIAL	PE	
SIZE (L*W*H)	400*300*3 MM	



413	301C	7409-W10-F1R
NAME	CAP WITH HOLE	
MATERIAL	PP	
SIZE (L*W*H)	10*10*3 MM	



414	302C	7409-W10-F20
NAME	TUBE BOLT CAP	
MATERIAL	PP	
SIZE (L*W*H)	8*8*5 MM	



415	303C	7409-W10-G1R
NAME	PEAR CAM	
MATERIAL	ABS	
SIZE (L*W*H)	12*12*10 MM	



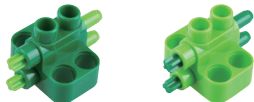
416	304C	7409-W10-G2R
NAME	DROP CAM	
MATERIAL	ABS	
SIZE (L*W*H)	20*10.5*15 MM	



417	305C	7409-W10-I1G
NAME	3 HOLE 90°CONNECTOR	
MATERIAL	ABS	
SIZE (L*W*H)	20*20*10 MM	



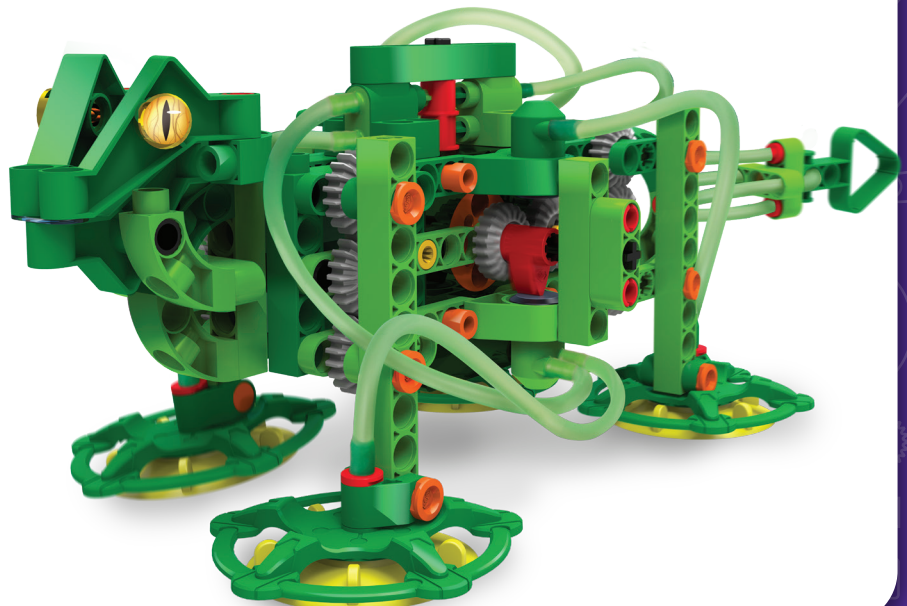
418	306C	7409-W85-C1G/G1
NAME	PNEUMATIC PUMP	
MATERIAL	ABS/PE	
SIZE (L*W*H)	35*30*35 MM	

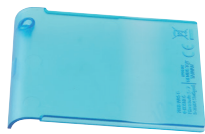


419	307C	7409-W85-D1G/G1
NAME	PNEUMATIC VALVE WITH TWO OUTPUTS	
MATERIAL	ABS	
SIZE (L*W*H)	40*30*25 MM	



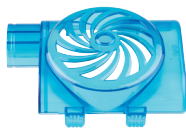
420	308C	7409-W85-E
NAME	SUCTION PAD	
MATERIAL	ABS/SILICONE	
SIZE (L*W*H)	80*80*32 MM	





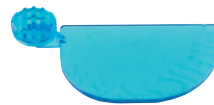
421 **309C** 7068-W10-A1TB

NAME	LOWER BLOWER CASE
MATERIAL	PC
SIZE (L*W*H)	72*57*9MM



422 **310C** 7068-W10-A2TB

NAME	UPPER BLOWER CASE
MATERIAL	PC
SIZE (L*W*H)	90*66*33MM



423 **311C** 7068-W10-A3TB

NAME	BLOWER SLIDE VALVE
MATERIAL	PC
SIZE (L*W*H)	37*18.3*6.6MM



424 **312C** 7068-W10-B1B

NAME	BLOWER IMPELLER
MATERIAL	ABS
SIZE (L*W*H)	54.5*54.5*22MM



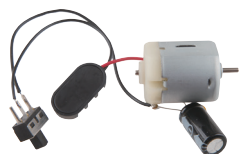
425 **313C** 7068-W10-B2B

NAME	BLOWER BODY
MATERIAL	ABS
SIZE (L*W*H)	96*62*36MM



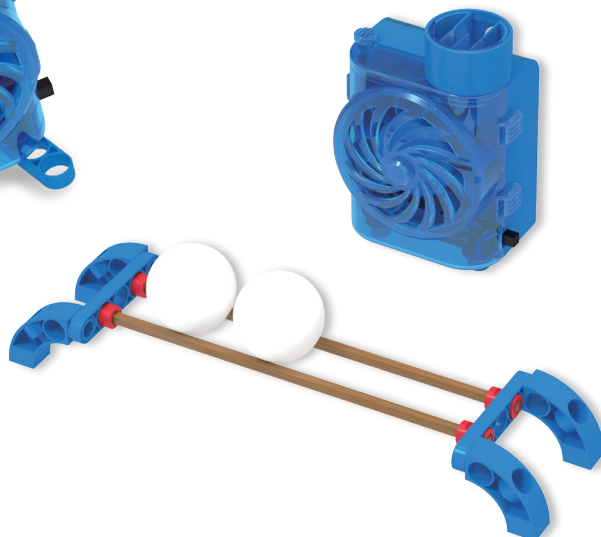
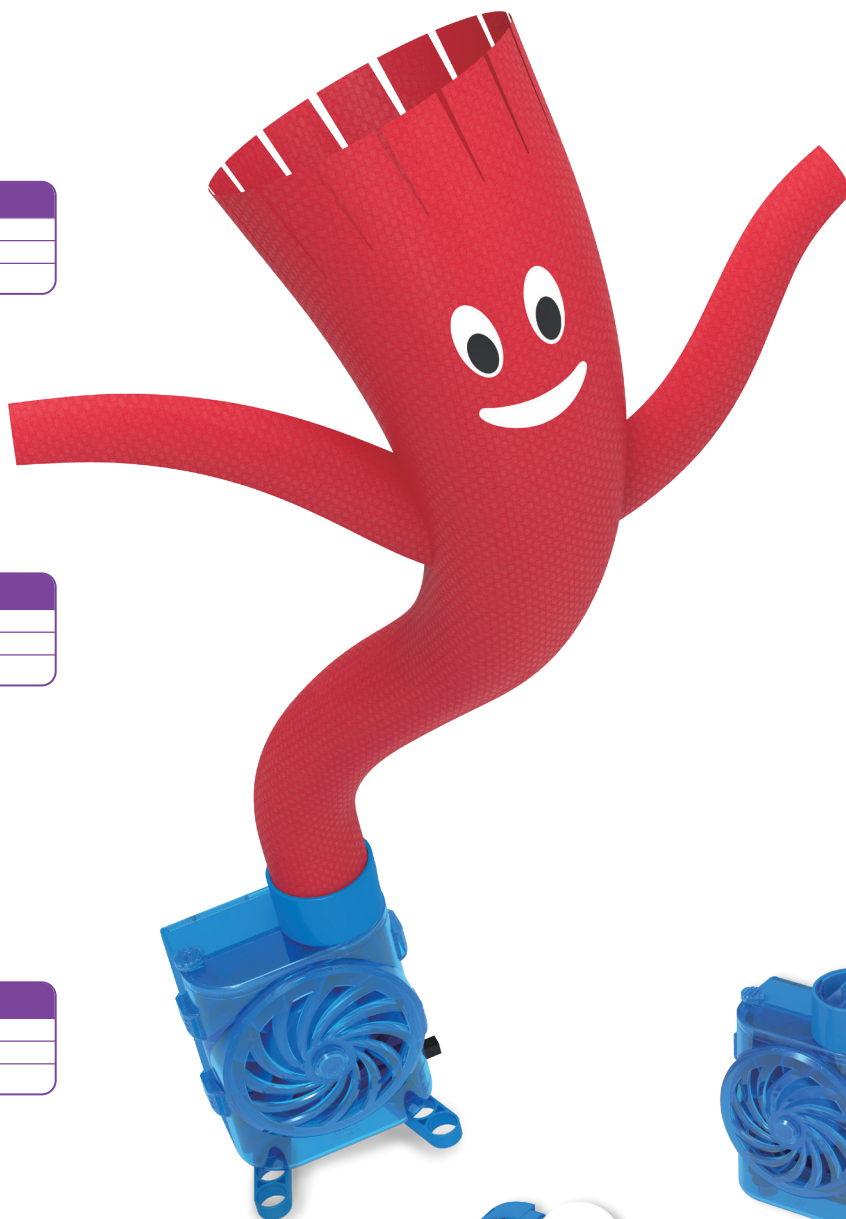
426 **314C** 7068-W10-B3B

NAME	BLOWER FIXING
MATERIAL	ABS
SIZE (L*W*H)	30*30*17MM



427 **315C** 7068-W85-A

NAME	AIR DANCER POWER SUPPLY UNIT
MATERIAL	WHITE IRON/COPPER/ABS
SIZE (L*W*H)	160*40*40MM



COMPONENTS

Information of components useful for freeing your inner creativity

OPTICAL



428	316C	7368-W85-A
NAME	40R CONVEX LENS	
MATERIAL	ABS/PC	
SIZE (L*W*H)	40*23*8 MM	



429	317C	7368-W85-B
NAME	40R CONCAVE LENS	
MATERIAL	ABS/PC	
SIZE (L*W*H)	40*23*8 MM	



430	318C	7368-W85-C
NAME	300R CONVEX LENS	
MATERIAL	ABS/PMMA	
SIZE (L*W*H)	53*50*8 MM	



431	319C	7368-W85-D
NAME	170R CONVEX LENS	
MATERIAL	ABS/PMMA	
SIZE (L*W*H)	53*50*8 MM	



432	320C	7368-W85-E
NAME	FOG LENS	
MATERIAL	ABS/PMMA	
SIZE (L*W*H)	53*50*8 MM	



433	321C	7368-W85-F
NAME	10R OBJECTIVE LENS	
MATERIAL	ABS/PC	
SIZE (L*W*H)	38*38*38 MM	



434	322C	7368-W10-E1D
NAME	EYEPIECE	
MATERIAL	ABS	
SIZE (L*W*H)	52*34*34 MM	



435	323C	7368-W10-F3D
NAME	OBJECTIVE LENS BASE	
MATERIAL	ABS	
SIZE (L*W*H)	50*50*20 MM	



436	324C	7368-W10-E2D
NAME	EXTENSION TUBE	
MATERIAL	ABS	
SIZE (L*W*H)	70*23*23 MM	



437	325C	7368-W10-E3D
NAME	EYEPIECE BASE	
MATERIAL	ABS	
SIZE (L*W*H)	32*50*50 MM	



438	326C	7368-W10-D6D
NAME	SHADING LENS	
MATERIAL	ABS	
SIZE (L*W*H)	23*21*5 MM	



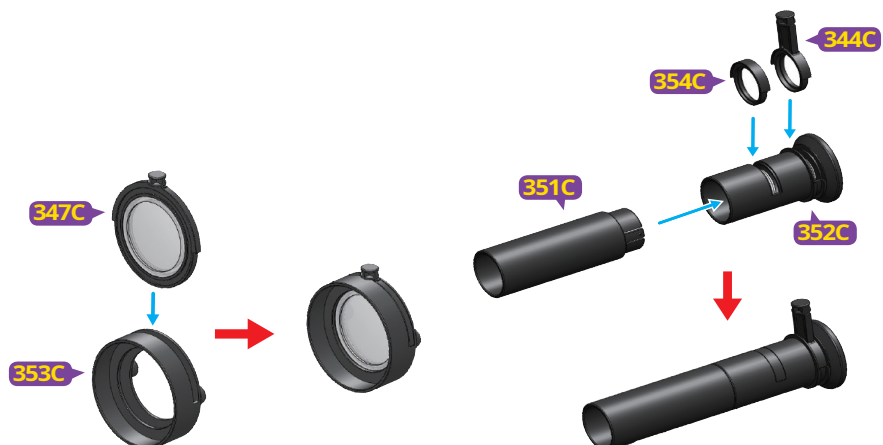
439	327C	7368-W10-E4D
NAME	FIXING RING	
MATERIAL	ABS	
SIZE (L*W*H)	30*30*10 MM	



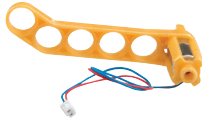
440	328C	7368-W10-H1D
NAME	SHAFT A	
MATERIAL	ABS	
SIZE (L*W*H)	39*39*15 MM	



441	329C	7368-W10-H2D
NAME	SHAFT B	
MATERIAL	ABS	
SIZE (L*W*H)	39*39*15 MM	



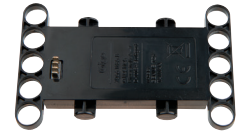
DRONE



442	330C	7066-W85-A1
NAME	MOTOR AND ARM ASSEMBLY, LEFT	
MATERIAL	PP	
SIZE (L*W*H)	57*31.5*30.5 MM	



443	331C	7066-W85-A2
NAME	MOTOR AND ARM ASSEMBLY, RIGHT	
MATERIAL	PP	
SIZE (L*W*H)	57*31.5*30.5 MM	



444	332C	7066-W85-B
NAME	CONTROLLER BOX	
MATERIAL	ABS	
SIZE (L*W*H)	80*50*14 MM	



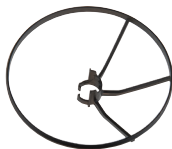
445	333C	7066-W85-C
NAME	HD CAMERA	
MATERIAL	ABS	
SIZE (L*W*H)	50*22*22 MM	



446	334C	7066-W85-D
NAME	3.7V LITHIUM BATTERY	
MATERIAL	ABS	
SIZE (L*W*H)	82.5*40*13.7 MM	



447	335C	7066-W85-E
NAME	LED HOLDER FOR DRONE	
MATERIAL	ABS/PC	
SIZE (L*W*H)	20*20*40 MM	



448	336C	7066-W10-E1D
NAME	PROPELLER SHIELD RING	
MATERIAL	POM	
SIZE (L*W*H)	83*83*22 MM	



449	337C	7066-W10-F1S
NAME	96T ANNULAR GEAR	
MATERIAL	ABS	
SIZE (L*W*H)	51.8*51.8*10 MM	



450	338C	7066-W10-F2S
NAME	SMALL PEG REMOVER	
MATERIAL	ABS	
SIZE (L*W*H)	64.5*18*10 MM	



451	339C	7066-W10-F3S
NAME	MINI GEAR	
MATERIAL	POM	
SIZE (L*W*H)	6*6*5.8 MM	



COMPONENTS

Information of components useful for freeing your inner creativity

ROLLER COASTER ENGINEERING



452	340C	7071-W10-A1R
NAME	160MM FLEXIBLE TRACK	
MATERIAL	PE	
SIZE (L*W*H)	170*28*12 MM	



453	341C	7071-W10-B1G
NAME	5-WAY ROD CONNECTOR	
MATERIAL	ABS	
SIZE (L*W*H)	20*20*14 MM	



454	342C	7071-W10-C1G
NAME	6-WAY ROD CONNECTOR	
MATERIAL	ABS	
SIZE (L*W*H)	20*20*20 MM	



455	343C	7071-W10-D1W
NAME	TRACK SUPPORT	
MATERIAL	PE	
SIZE (L*W*H)	20*18*10 MM	



456	344C	7071-W10-E1S
NAME	FRAME STRUT	
MATERIAL	ABS	
SIZE (L*W*H)	108*18*10 MM	



457	345C	7071-W10-F1S
NAME	FRAME ROD	
MATERIAL	ABS	
SIZE (L*W*H)	150*10*10 MM	



458	346C	7071-W10-G1TP
NAME	CAR COVER	
MATERIAL	PP	
SIZE (L*W*H)	34*27*23 MM	



459	347C	7071-W10-G2TP
NAME	CAR BODY	
MATERIAL	PP	
SIZE (L*W*H)	40*22*28 MM	



460	348C	7071-W10-H1D
NAME	CAR CHASSIS	
MATERIAL	ABS	
SIZE (L*W*H)	48*20*40 MM	



461	349C	7071-W85-A
NAME	CAR WHEEL SET	
MATERIAL	ABS	
SIZE (L*W*H)	12.5*12.5*13MM	



462	350C	7071-W10-H4D
NAME	CAR LAUNCH TRIGGER	
MATERIAL	ABS	
SIZE (L*W*H)	11.5*4*7.5 MM	



463	351C	7071-W10-H5D
NAME	CAR COUPLER	
MATERIAL	ABS	
SIZE (L*W*H)	16.5*6*6 MM	



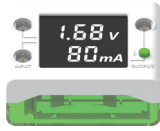
464	352C	7071-W85-B
NAME	LAUNCHER	
MATERIAL	PC	
SIZE (L*W*H)	140*60*38MM	



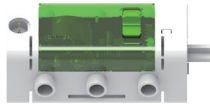
465	353C	7071-W10-I5R
NAME	LAUNCHER TRACK	
MATERIAL	PC	
SIZE (L*W*H)	170*28*12 MM	



ALTERNATIVE ENERGY CLASSROOM KIT



466	354C	1410-W85-A
NAME	GEMS(GREEN ENERGY MANAGEMENT SYSTEM)	
MATERIAL	BIO-ABS/PC	
SIZE (L*W*H)	70*50*30MM	



467	355C	1410-W85-B
NAME	VARIABLE RATIO GENERATOR	
MATERIAL	BIO-ABS/PC	
SIZE (L*W*H)	80*30*30MM	



468	356C	1410-W85-C
NAME	4.5V SOLAR PANEL PACK	
MATERIAL	BIO-ABS/PC	
SIZE (L*W*H)	90*70*40MM	



469	357C	1410-W85-D
NAME	WIND TURBINE BASE	
MATERIAL	BIO-ABS/PC	
SIZE (L*W*H)	30*30*30MM	



470	358C	1410-W85-E
NAME	WIND TURBINE UNIT	
MATERIAL	BIO-ABS/PC	
SIZE (L*W*H)	60*40*20MM	



471	359C	1410-W85-F
NAME	3.6V LITHIUM-ION BUTTON BATTERY	
MATERIAL	BIO-ABS/PC	
SIZE (L*W*H)	40*30*35MM	



472	360C	1410-W85-G
NAME	BUZZER	
MATERIAL	BIO-ABS/PC	
SIZE (L*W*H)	30*30*35MM	



473	361C	1410-W85-H
NAME	LED HOLDER (2-PIN)	
MATERIAL	BIO-ABS/PC	
SIZE (L*W*H)	30*30*35MM	



474	362C	1410-W85-I
NAME	CONNECTING CABLE (2-PIN)	
MATERIAL	BIO-ABS/PC	
SIZE (L*W*H)	150*10*20MM	



475	363C	1410-W10-A1TG
NAME	WIND TOWER	
MATERIAL	PC	
SIZE (L*W*H)	112*18*9MM	



476	364C	1410-W10-A2TG
NAME	WIND CONE	
MATERIAL	PC	
SIZE (L*W*H)	22*22*28MM	

COMPONENTS

Information of components useful for freeing your inner creativity



477	365C	1410-W10-B1W
NAME	BLADE ROTOR	
MATERIAL	BIO-ABS	
SIZE (L*W*H)	22*22*11MM	



478	366C	1410-W10-B2W
NAME	BLADE	
MATERIAL	BIO-ABS	
SIZE (L*W*H)	135*22*7MM	



479	367C	1410-W10-B3W
NAME	BLADE ADAPTER	
MATERIAL	BIO-ABS	
SIZE (L*W*H)	6*6*20MM	



480	368C	1410-W10-C1TG
NAME	WINDSHIELD	
MATERIAL	PC	
SIZE (L*W*H)	96*45*22MM	



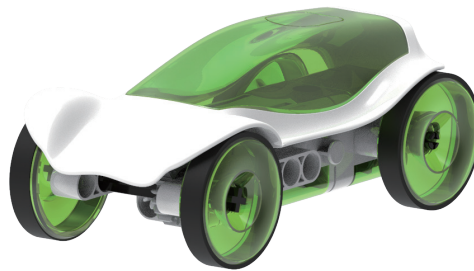
481	369C	1410-W10-C2TG
NAME	SUNROOF	
MATERIAL	PC	
SIZE (L*W*H)	19*21*5MM	



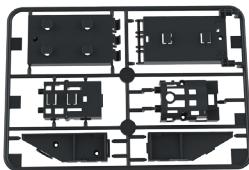
482	370C	1410-W10-C3TG
NAME	CAR WHEEL	
MATERIAL	PC	
SIZE (L*W*H)	37*37*12MM	



483	371C	1410-W10-D1W
NAME	CAR FRAME	
MATERIAL	BIO-ABS	
SIZE (L*W*H)	140*72*35MM	



HOVERCRAFT



484	372C	7085-W10-A1B
NAME	HOVERCRAFT BODY FRAME	
MATERIAL	ABS	
SIZE (L*W*H)	127*184*23.6 MM	



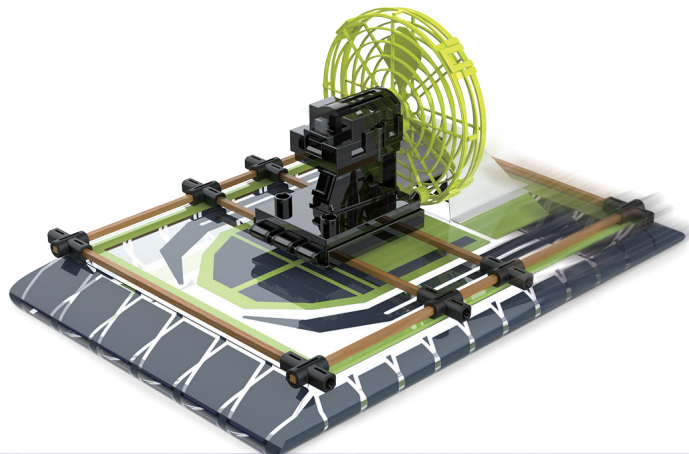
485	373C	7085-W10-B1G
NAME	PROPELLER WINDSHIELD BASE	
MATERIAL	PP	
SIZE (L*W*H)	Ø93*18.5 MM	



486	374C	7085-W10-B2G
NAME	PROPELLER WINDSHIELD FRONT COVER	
MATERIAL	PP	
SIZE (L*W*H)	Ø94*14.5 MM	



487	375C	7085-W10-B3G
NAME	PROPELLER	
MATERIAL	PP	
SIZE (L*W*H)	Ø77.8*14 MM	



D BLOCK-X GEO-11 PCS

BASIC

Used for all model construction. Can be easily put together with connectors to develop creativity.



488	1D	1210-W10-A1TK
NAME	EQUILATERAL TRIANGLE	
MATERIAL	ABS	
SIZE (L*W*H)	70*70*5 MM	



489	2D	1210-W10-C1TO
NAME	RIGHT TRIANGLE	
MATERIAL	ABS	
SIZE (L*W*H)	92*50*5 MM	



490	3D	1210-W10-H1TY
NAME	ISOSCELES TRIANGLE	
MATERIAL	ABS	
SIZE (L*W*H)	90*70*5 MM	



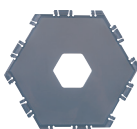
491	4D	1210-W10-G1TG
NAME	SQUARE	
MATERIAL	ABS	
SIZE (L*W*H)	75*75*5 MM	



492	5D	1210-W10-D1TB1
NAME	RECTANGLE	
MATERIAL	ABS	
SIZE (L*W*H)	105*75*5 MM	



493	6D	1210-W10-E1TP
NAME	PENTAGON	
MATERIAL	ABS	
SIZE (L*W*H)	113*113*5 MM	



494	7D	1210-W10-F1TD
NAME	HEXAGON	
MATERIAL	ABS	
SIZE (L*W*H)	140*15*5 MM	



495	8D	1210-W10-B1SK
NAME	X GEO CONNECTOR	
MATERIAL	ABS	
SIZE (L*W*H)	65*22*10 MM	



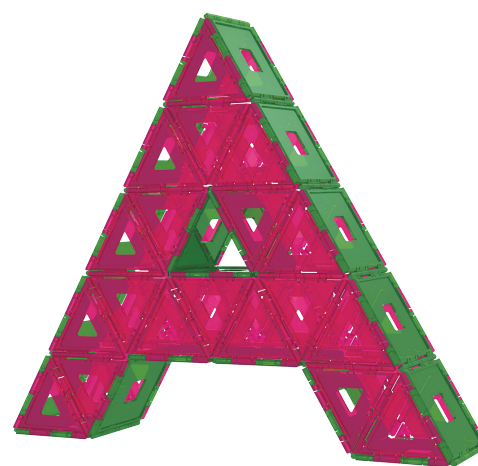
496	9D	7452-W10-A1Y
NAME	TRIANGULAR SHELL PIECE	
MATERIAL	ABS	
SIZE (L*W*H)	70*70*9.6MM	



497	10D	7452-W10-A2B
NAME	TRIANGULAR SHELL PIECE	
MATERIAL	ABS	
SIZE (L*W*H)	70*70*9.6MM	



498	11D	7452-W10-B1B
NAME	PENTAGONAL SHELL PIECE	
MATERIAL	ABS	
SIZE (L*W*H)	113*113*18.7MM	



COMPONENTS

Information of components useful for freeing your inner creativity

E BLOCK-PANEL-29 PCS

FURNITURE

The connectors are used to connect tubes with locking pins.



499	1E	1136-W10-A1P
NAME	STRAIGHT CONNECTOR	
MATERIAL	ABS	
SIZE (L*W*H)	130*32*32 MM	



500	2E	1060-W10-A1B2
NAME	CORNER CONNECTOR	
MATERIAL	ABS	
SIZE (L*W*H)	80*80*32 MM	



501	3E	1060-W10-C1K
NAME	T SHAPE CONNECTOR	
MATERIAL	ABS	
SIZE (L*W*H)	130*80*32 MM	



502	4E	1060-W10-B1G
NAME	3-WAY CONNECTOR	
MATERIAL	ABS	
SIZE (L*W*H)	80*80*80 MM	



503	5E	1060-W10-D1P
NAME	4-WAY CONNECTOR	
MATERIAL	ABS	
SIZE (L*W*H)	130*80*80 MM	



504	6E	1136-W10-B1G
NAME	CROSS CONNECTOR	
MATERIAL	ABS	
SIZE (L*W*H)	130*130*32 MM	



505	7E	1060-W10-E1K
NAME	5-WAY CONNECTOR	
MATERIAL	ABS	
SIZE (L*W*H)	130*130*80 MM	



506	8E	1136-W10-C1SR
NAME	114° ELBOW	
MATERIAL	ABS	
SIZE (L*W*H)	110*50*32 MM	



507	9E	1136-W10-D1SR
NAME	135° ELBOW	
MATERIAL	ABS	
SIZE (L*W*H)	112*55*32 MM	



508	10E	1136-W10-C2SR
NAME	156° ELBOW	
MATERIAL	ABS	
SIZE (L*W*H)	112*55*32 MM	



509	11E	1060-W85-H1G
NAME	PANEL-LOCK CONNECTOR	
MATERIAL	ABS	
SIZE (L*W*H)	105*55*28 MM	



510	12E	1060-W10-G1SR
NAME	TUBE END COVER	
MATERIAL	ABS	
SIZE (L*W*H)	32*32*15 MM	



511	13E	1060-W17-C5S
NAME	105mm TUBE	
MATERIAL	ABS	
SIZE (L*W*H)	105*55*32 MM	



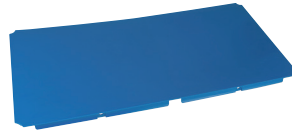
512	14E	1060-W17-C7SR
NAME	300mm TUBE	
MATERIAL	ABS	
SIZE (L*W*H)	300*55*32 MM	



513	15E	1060-W17-C10S
NAME	CURVED TUBE	
MATERIAL	ABS	
SIZE (L*W*H)	480*135*32 MM	



514	16E	1137-W85-A1Y
NAME	EXPANDABLE SLIDE	
MATERIAL	PP	
SIZE (L*W*H)	730*390*95 MM	



515	17E	1131-W10-A1B
NAME	PLASTIC BOARD	
MATERIAL	PP	
SIZE (L*W*H)	777*389*35 MM	



516	18E	3599-W10-A1P
NAME	SQUARE FLAT II	
MATERIAL	PP	
SIZE (L*W*H)	390*352*35 MM	



517	19E	1137-W10-C1Y
NAME	SAFETY COVER L	
MATERIAL	PP	
SIZE (L*W*H)	110*60*105 MM	



518	20E	1137-W10-C2Y
NAME	SAFETY COVER R	
MATERIAL	PP	
SIZE (L*W*H)	110*60*105 MM	



519	21E	1277-W10-A1Y
NAME	SLIDE END	
MATERIAL	PP	
SIZE (L*W*H)	392*140*165 MM	



520	22E	1060-W85-M1G
NAME	RELEASE PLIERS	
MATERIAL	POM	
SIZE (L*W*H)	145*43*12 MM	



COMPONENTS

Information of components useful for freeing your inner creativity



521	23E	1136-W90-E2S
NAME	U CLAMP & WASHER	
MATERIAL	ABS	
SIZE (L*W*H)	115*45*32 MM	



522	24E	1137-W85-A2S
NAME	300mm DOUBLE LOCKING TUBE	
MATERIAL	ABS	
SIZE (L*W*H)	35*32*300 MM	



523	25E	1137-W85-A1S
NAME	300mm SINGLE LOCKING TUBE	
MATERIAL	ABS	
SIZE (L*W*H)	35*32*300 MM	



524	26E	1137-W85-A4S
NAME	95mm SINGLE LOCKING TUBE	
MATERIAL	ABS	
SIZE (L*W*H)	35*32*95 MM	



525	27E	1137-W10-B1SR
NAME	TUBE SCREW	
MATERIAL	PC	
SIZE (L*W*H)	22*20*20 MM	



526	28E	1136-W85-F1SR
NAME	CASTER	
MATERIAL	ABS/NYLON	
SIZE (L*W*H)	100*60*40 MM	



527	29E	1136-W85-F2SR
NAME	CASTER WITH LOCK	
MATERIAL	ABS/NYLON	
SIZE (L*W*H)	100*65*40 MM	



F BLOCK-ULTRA LIGHT- 28 PCS

ULTRA LIGHT



528	1F	7402-W10-A1D2
NAME	STRAIGHT CONNECTOR	
MATERIAL	TPR+PP	
SIZE (L*W*H)	25*5.5*5.5MM	



529	2F	7402-W10-A2D2
NAME	150 DEGREE CONNECTOR	
MATERIAL	TPR+PP	
SIZE (L*W*H)	30*8*6.8 MM	



530	3F	7402-W10-A3D2
NAME	STABILIZER CONNECTORS	
MATERIAL	TPR+PP	
SIZE (L*W*H)	30*8*6.8 MM	



531	4F	7402-W10-B1D
NAME	AIRFOIL RIB	
MATERIAL	PP	
SIZE (L*W*H)	30*8*6.8 MM	



532	5F	R36#7402-1
NAME	90mm BAMBOO SQUARE BAR	
MATERIAL	BAMBOO	
SIZE (L*W*H)	90*3*3 MM	



533	6F	R36#7402-2
NAME	150mm BAMBOO SQUARE BAR	
MATERIAL	BAMBOO	
SIZE (L*W*H)	150*3*3 MM	



534	7F	R36#7402-3
NAME	220mm BAMBOO SQUARE BAR	
MATERIAL	BAMBOO	
SIZE (L*W*H)	220*3*3MM	



535	8F	R36#7402-5
NAME	300mm BAMBOO SQUARE BAR	
MATERIAL	BAMBOO	
SIZE (L*W*H)	300*3*3MM	



536	9F	7402-W10-C1D
NAME	BAMBOO FIXER PEG	
MATERIAL	PP	
SIZE (L*W*H)	7.94*10 MM	



537	10F	7402-W10-C2D
NAME	NOSE CONE	
MATERIAL	PP	
SIZE (L*W*H)	10*10*10 MM	



538	11F	7403-W10-B2D
NAME	H SHAPE CONNECTOR	
MATERIAL	POM	
SIZE (L*W*H)	26.5*20*6.5 MM	



539	12F	7403-W10-A1D
NAME	TAIL FIXTURE	
MATERIAL	TPR+PP	
SIZE (L*W*H)	30*7*8 MM	



540	13F	7403-W10-C1D1
NAME	X SHAPE CONNECTOR	
MATERIAL	TPR+PP	
SIZE (L*W*H)	25*16*8 MM	



541	14F	7403-W10-A2D
NAME	150° X SHAPE CONNECTOR	
MATERIAL	TPR+PP	
SIZE (L*W*H)	26*16*8 MM	



542	15F	7422-W10-B1D
NAME	TRIPOD CONNECTOR	
MATERIAL	TPR+PP	
SIZE (L*W*H)	24*24*12 MM	



543	16F	7403-W10-D2D
NAME	PROPELLER CLUTCH	
MATERIAL	NYLON	
SIZE (L*W*H)	15*8 MM	



544	17F	7403-W10-D1D
NAME	HOOK	
MATERIAL	NYLON	
SIZE (L*W*H)	55*4 MM	

COMPONENTS

Information of components useful for freeing your inner creativity



545	18F	7403-W10-D3D
NAME	PROPELLER CLUTCH CAP	
MATERIAL	NYLON	
SIZE (L*W*H)	12*8 MM	



546	19F	7403-W10-B1D
NAME	HOOK FIXTURE	
MATERIAL	POM	
SIZE (L*W*H)	24.5*30*10 MM	



547	20F	7388-W10-D1S
NAME	10T AXLE GEAR	
MATERIAL	POM	
SIZE (L*W*H)	12*12*4 MM	



548	21F	7422-W10-D1S
NAME	20T AXLE GEAR	
MATERIAL	POM	
SIZE (L*W*H)	22*22*4 MM	



549	22F	7388-W10-E1S
NAME	30T AXLE GEAR	
MATERIAL	POM	
SIZE (L*W*H)	32*32*4 MM	



550	23F	7388-W10-L1D
NAME	OD45 PROPELLER WHEEL	
MATERIAL	POM	
SIZE (L*W*H)	45*45*6.6MM	



551	24F	7403-W10-E1D
NAME	OD170 PROPELLER	
MATERIAL	PP	
SIZE (L*W*H)	170*15 MM	



552	25F	7388-W10-I1R
NAME	SHORT AXLE	
MATERIAL	POM	
SIZE (L*W*H)	9.8*9.8*9.9 MM	



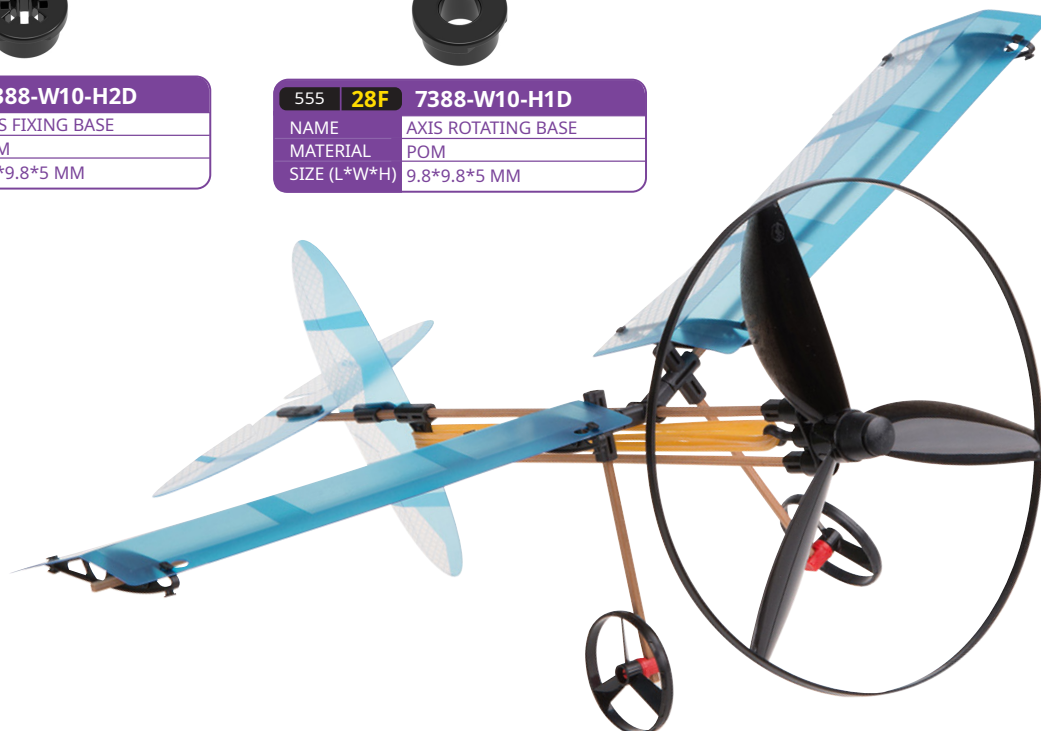
553	26F	7388-W10-I3R
NAME	AXLE CONNECTOR	
MATERIAL	POM	
SIZE (L*W*H)	8.5*8.5*16 MM	



554	27F	7388-W10-H2D
NAME	AXIS FIXING BASE	
MATERIAL	POM	
SIZE (L*W*H)	9.8*9.8*5 MM	

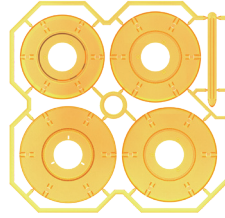
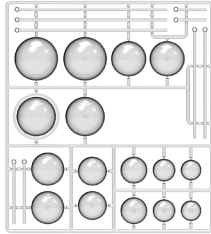


555	28F	7388-W10-H1D
NAME	AXIS ROTATING BASE	
MATERIAL	POM	
SIZE (L*W*H)	9.8*9.8*5 MM	



H BLOCK-SPURE FRAME-54 PCS

ORBITING SOLAR SYSTEM



556	1H	7069-W10-A1
NAME	PLASTIC PARTS GROUP A	
MATERIAL	PC	
SIZE (L*W*H)	213*192*22MM	

557	2H	7069-W10-B1TY
NAME	PLASTIC PARTS GROUP B	
MATERIAL	PC	
SIZE (L*W*H)	192*185*14.3MM	

558	3H	7069-W10-C1TY
NAME	PLASTIC PARTS GROUP C	
MATERIAL	PC	
SIZE (L*W*H)	192*192*52MM	



559	4H	7069-W10-D1O
NAME	SUN GEAR	
MATERIAL	POM	
SIZE (L*W*H)	21*21*6MM	

560	5H	7069-W10-D2O
NAME	SATELLITE GEAR	
MATERIAL	POM	
SIZE (L*W*H)	11*11*4.6MM	

561	6H	7069-W10-F1O
NAME	REDUCTION GEAR	
MATERIAL	POM	
SIZE (L*W*H)	17*17*5.9MM	



562	7H	7069-W10-F2O
NAME	RATCHET DRIVEN WHEEL	
MATERIAL	POM	
SIZE (L*W*H)	51*51*8MM	

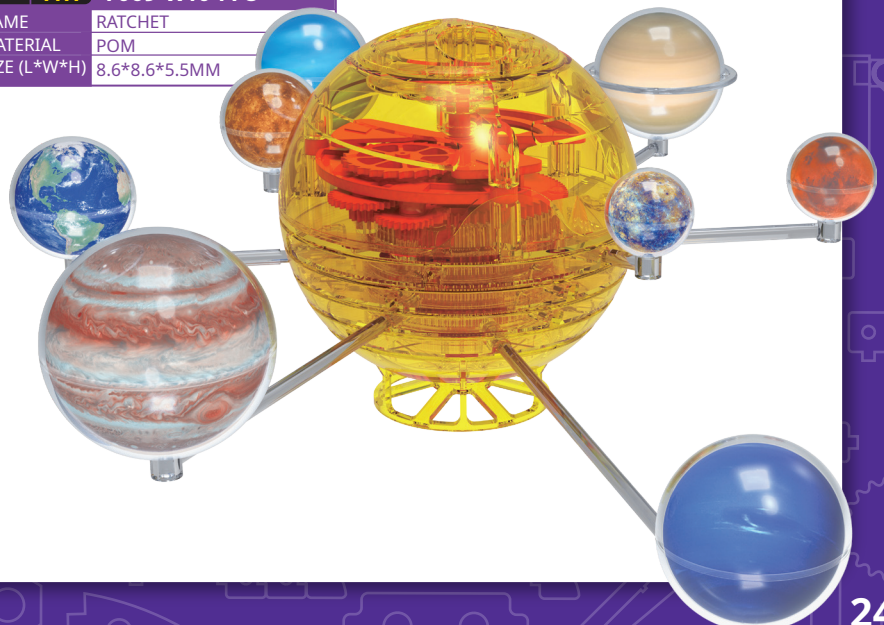
563	8H	7069-W10-F4O
NAME	ESCAPE WHEEL	
MATERIAL	POM	
SIZE (L*W*H)	27.7*27.7*9.3MM	

564	9H	7069-W10-F5O
NAME	ESCAPEMENT	
MATERIAL	POM	
SIZE (L*W*H)	60*60*3.5MM	



565	10H	7069-W10-F6O
NAME	SUN AXIS	
MATERIAL	POM	
SIZE (L*W*H)	7.6*7.6*31.5MM	

566	11H	7069-W10-F7O
NAME	RATCHET	
MATERIAL	POM	
SIZE (L*W*H)	8.6*8.6*5.5MM	

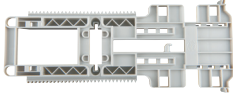


567	12H	7069-W85-A
NAME	CLOCKWORK BOX	
MATERIAL	ABS	
SIZE (L*W*H)	66.6*58.5*33MM	

COMPONENTS

Information of components useful for freeing your inner creativity

ULTRA BIONIC BLASTER



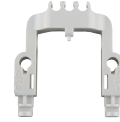
568 **13H** 7080-W10-A1S

NAME	BLASTER FRAME
MATERIAL	HIPS
SIZE (L*W*H)	190*80*17MM



569 **14H** 7080-W10-B1S

NAME	CYLINDER SUPPORT
MATERIAL	ABS
SIZE (L*W*H)	50*35*26MM



570 **15H** 7080-W10-B2S

NAME	CYLINDER PIVOT
MATERIAL	ABS
SIZE (L*W*H)	50*48*16.6MM



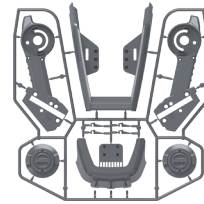
571 **16H** 7080-W10-B3S

NAME	INNER LIFT SUPPORT
MATERIAL	ABS
SIZE (L*W*H)	70*10*20MM



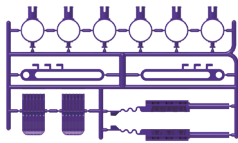
572 **17H** 7080-W10-B4S

NAME	OUTER LIFT SUPPORT
MATERIAL	ABS
SIZE (L*W*H)	70*10*20MM



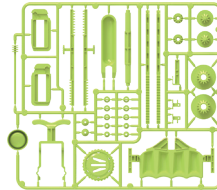
573 **18H** 7080-W10-C1S

NAME	FRAME C WITH PARTS C1-C6
MATERIAL	HIPS
SIZE (L*W*H)	240*230*45MM



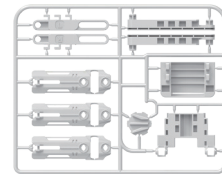
574 **19H** 7080-W10-D1P

NAME	FRAME D WITH PARTS D1-D7
MATERIAL	HIPS
SIZE (L*W*H)	195*115*15MM



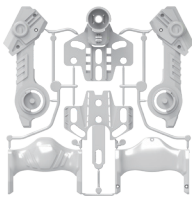
575 **20H** 7080-W10-E1G

NAME	FRAME E WITH PARTS E1-E21
MATERIAL	POM
SIZE (L*W*H)	255*225*35MM



576 **21H** 7080-W10-F1S

NAME	FRAME F WITH PARTS F1-F8
MATERIAL	HIPS
SIZE (L*W*H)	195*155*26MM



577 **22H** 7080-W10-G1S

NAME	FRAME G WITH PARTS G1-G6
MATERIAL	HIPS
SIZE (L*W*H)	230*230*35MM



578 **23H** 7080-W10-H1S

NAME	BLASTER FIXTURE (LEFT)
MATERIAL	HIPS
SIZE (L*W*H)	72.5*39*43.5MM



579 **24H** 7080-W10-H2S

NAME	BLASTER FIXTURE (RIGHT)
MATERIAL	HIPS
SIZE (L*W*H)	72.5*39*43.5MM



580 **25H** 7080-W10-H3S

NAME	HANDLE
MATERIAL	HIPS
SIZE (L*W*H)	65*35*37MM



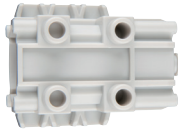
581 **26H** 7080-W10-H4S

NAME	RESERVE CLIP
MATERIAL	HIPS
SIZE (L*W*H)	43*26*14.5MM

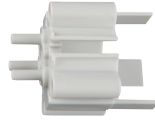


582 **27H** 7080-W10-I1S

NAME	DART HOLDER
MATERIAL	ABS
SIZE (L*W*H)	75.5*17.5*29.5MM



583	28H	7080-W10-J1S
NAME	OUTER CYLINDER	
MATERIAL	HIPS	
SIZE (L*W*H)	40*40*56MM	



584	29H	7080-W10-J2S
NAME	REAR NOZZLE	
MATERIAL	HIPS	
SIZE (L*W*H)	30*30*44MM	



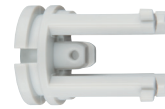
585	30H	7080-W10-J3S
NAME	CYLINDER HOUSING	
MATERIAL	HIPS	
SIZE (L*W*H)	30*30*22MM	



586	31H	7080-W10-J4S
NAME	PISTON CAP	
MATERIAL	HIPS	
SIZE (L*W*H)	16.8*16.8*11.5MM	



587	32H	7080-W10-J5S
NAME	PISTON SLEEVE	
MATERIAL	HIPS	
SIZE (L*W*H)	12.6*12.6*15.8MM	



588	33H	7080-W10-K1S
NAME	PISTON BASE	
MATERIAL	POM	
SIZE (L*W*H)	27*27*30MM	



589	34H	7080-W10-K2S
NAME	PISTON HOOK	
MATERIAL	POM	
SIZE (L*W*H)	14*9*5MM	



590	35H	7080-W10-K3S
NAME	PISTON ROD	
MATERIAL	POM	
SIZE (L*W*H)	52.7*12.6*12.6MM	



591	36H	7080-W10-K4S
NAME	AIR WHEEL	
MATERIAL	POM	
SIZE (L*W*H)	23*23*20MM	

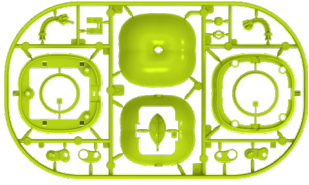


592	37H	7080-W10-K5S
NAME	ARM ADJUSTER	
MATERIAL	POM	
SIZE (L*W*H)	82*25*30MM	

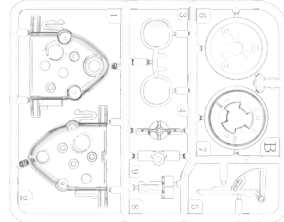
COMPONENTS

Information of components useful for freeing your inner creativity

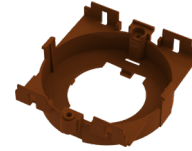
NEWTON'S APPLE: TIGHTROPE-WALKING GYROBOT



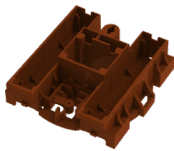
593	38H	7083-W10-A1G
NAME	GREEN PLASTIC FRAME	
MATERIAL	ABS	
SIZE (L*W*H)	271*144*20MM	



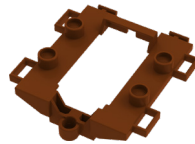
594	39H	7083-W10-B1
NAME	WHITE PLASTIC FRAME	
MATERIAL	PC	
SIZE (L*W*H)	124*102*21MM	



595	40H	7083-W85-C
NAME	APPLE BASE	
MATERIAL	ABS	
SIZE (L*W*H)	62*55*21.5MM	



596	41H	7083-W10-C1T
NAME	BATTERY BOX	
MATERIAL	ABS	
SIZE (L*W*H)	58*58*21MM	



597	42H	7083-W10-C3T
NAME	BATTERY BOX LID	
MATERIAL	ABS	
SIZE (L*W*H)	64*60*19MM	



598	43H	7083-W10-C4T
NAME	MOTOR COVER	
MATERIAL	ABS	
SIZE (L*W*H)	47*23*25MM	



599	44H	7083-W10-C5T
NAME	APPLE STEM	
MATERIAL	ABS	
SIZE (L*W*H)	26.5*12.5*7MM	



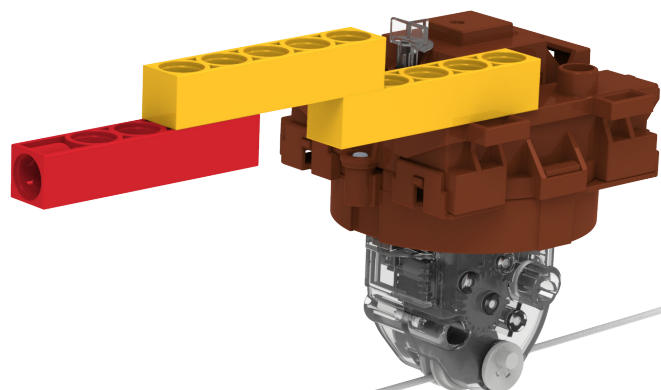
600	45H	7083-W10-D1S
NAME	24T OUTER SAFETY GEAR	
MATERIAL	POM	
SIZE (L*W*H)	13*13*2.7MM	



601	46H	7083-W10-D2S
NAME	24T/10T EXTENDED DOUBLE GEAR	
MATERIAL	POM	
SIZE (L*W*H)	13*13*15.6MM	



602	47H	7083-W10-D3S
NAME	24T/10T DOUBLE GEAR	
MATERIAL	POM	
SIZE (L*W*H)	13*13*5.8MM	





603	48H	7083-W10-D5S
NAME	PEDAL SHAFT (LEFT)	
MATERIAL	POM	
SIZE (L*W*H)	10.3*10.3*32MM	



604	49H	7083-W10-D6S
NAME	PEDAL SHAFT (RIGHT)	
MATERIAL	POM	
SIZE (L*W*H)	7.3*7.3*7.3MM	



605	50H	7083-W10-D7S
NAME	24T/10T CROWN GEAR	
MATERIAL	POM	
SIZE (L*W*H)	13*13*9.5MM	



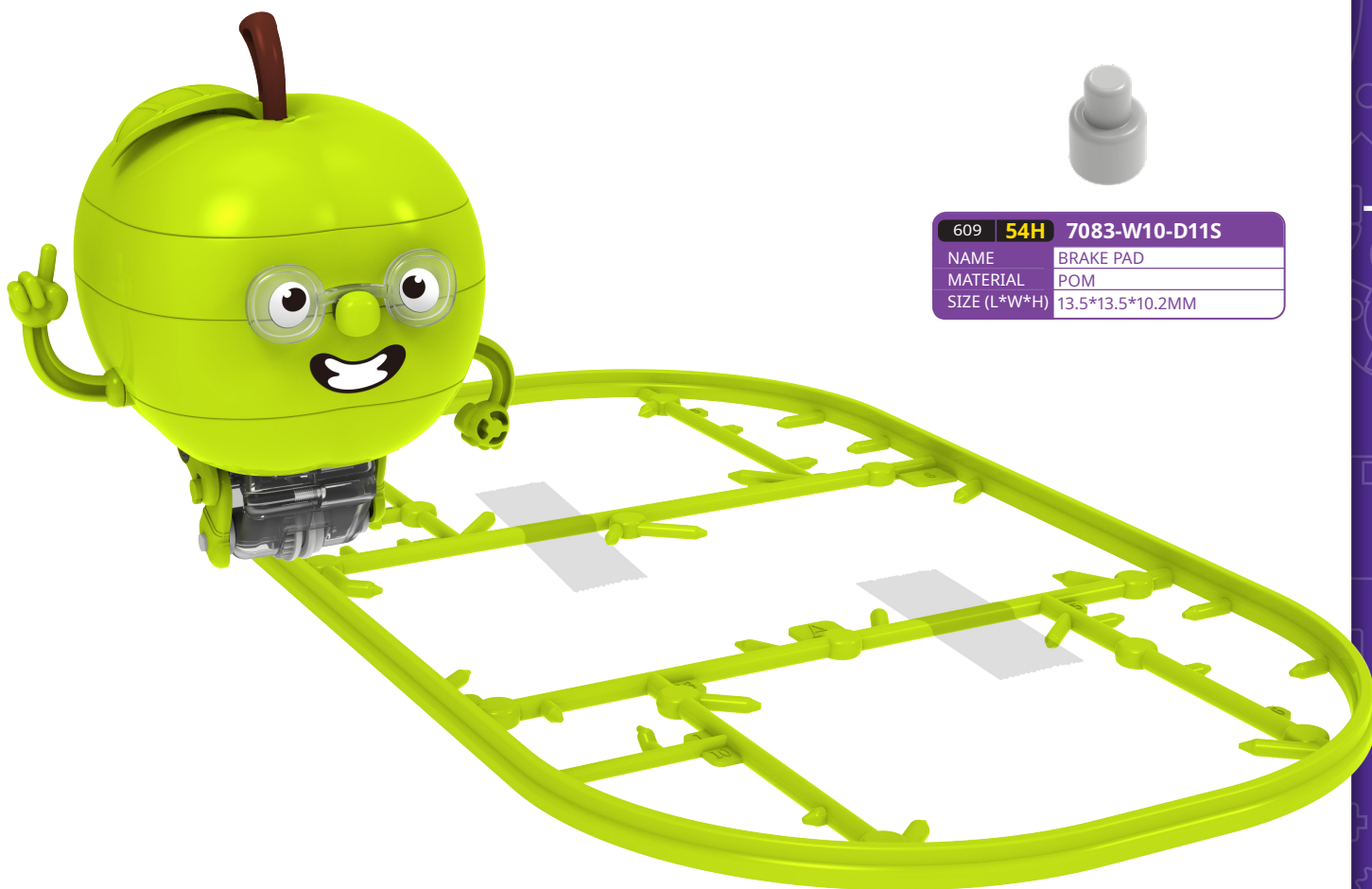
606	51H	7083-W10-D8S
NAME	APPLE WHEEL (RIGHT)	
MATERIAL	POM	
SIZE (L*W*H)	16*16*5MM	



607	52H	7083-W10-D9S
NAME	10T INNER SAFETY GEAR	
MATERIAL	POM	
SIZE (L*W*H)	9*9*4.8MM	



608	53H	7083-W10-D10S
NAME	APPLE WHEEL (LEFT)	
MATERIAL	POM	
SIZE (L*W*H)	16*16*3.2MM	



609	54H	7083-W10-D11S
NAME	BRAKE PAD	
MATERIAL	POM	
SIZE (L*W*H)	13.5*13.5*10.2MM	