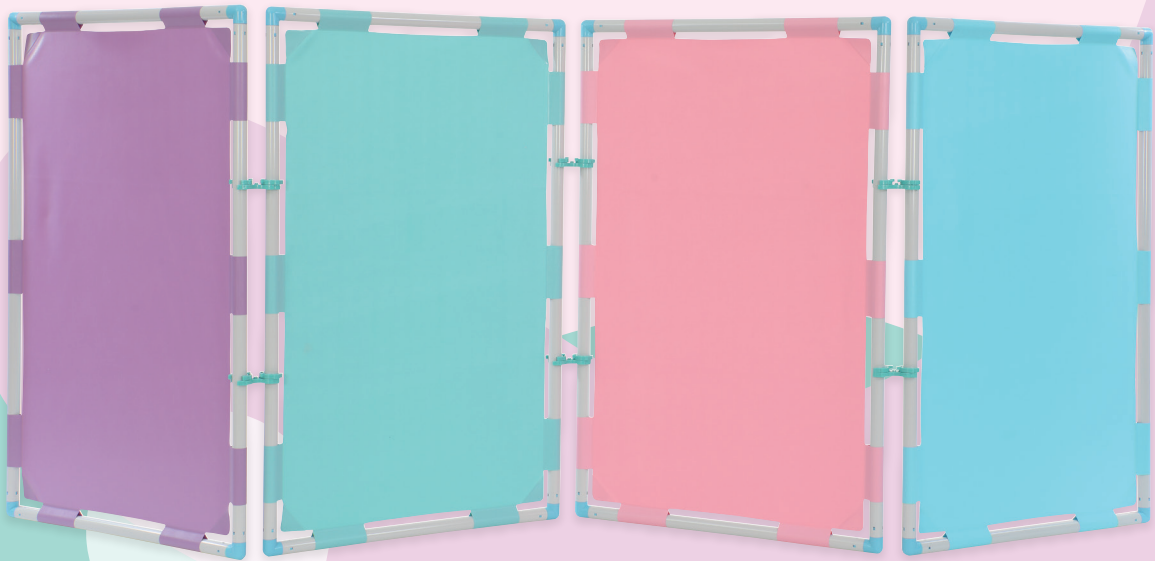
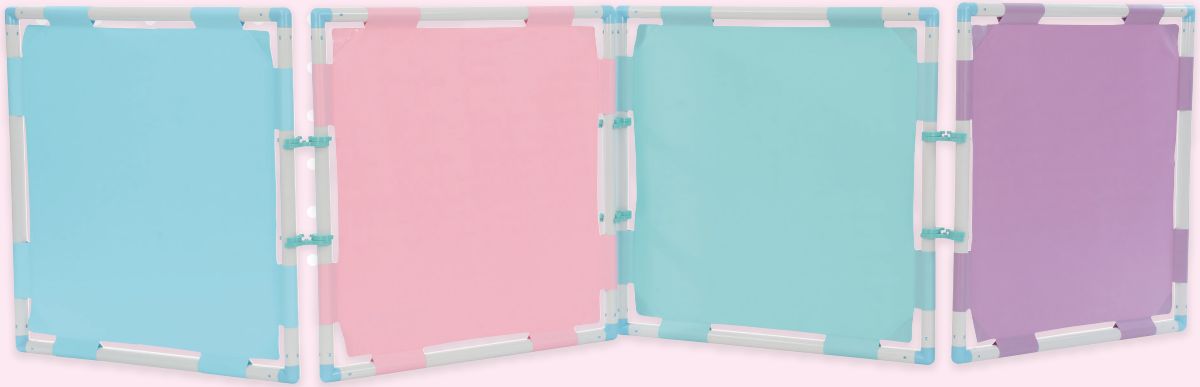




PANEL SERIES

SQUARE VINYL PANEL



See more panel
series here!

ASSEMBLY STEPS

Important:

This set is intended for adult assembly only. Please read all instructions carefully before beginning.

1. Keep unused parts in the marked bag(s) until required. Some parts appear similar and may be confused.
2. Assemble each section separately - as shown in the exploded diagrams.
3. If parts need to be loosened, use the included RELEASE PLIERS to assist you.
4. After each section is complete, assemble the completed sections together into the final unit.

Assembly & Disassembly

How to assemble & disassemble tubes and connectors

Note: Do not hold a tube or connector where the insertion takes place, fingers may be pinched.

- (1) Push the corner connector onto the tube and twist the tube until a "click" is heard.

- (2) Position the RELEASE PLIERS nodes over the holes where the safety lock pins are visible. Squeeze gently to release the tube from the connector.

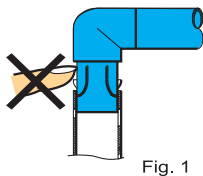


Fig. 1

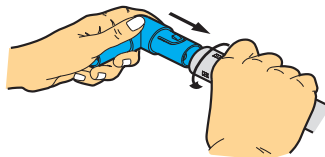


Fig. 2

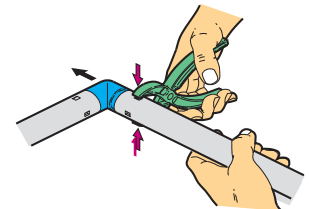


Fig. 3

How to assemble a pair of panel feet

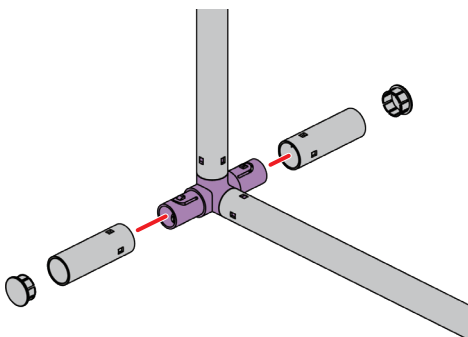


Fig. 4

How to assemble panel-lock connector

1. Push panel-lock connector onto the side panel tube for joining two panels.

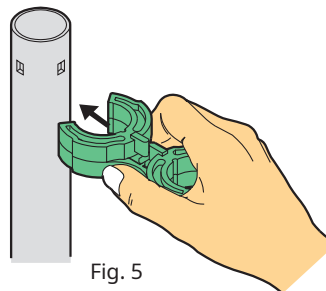


Fig. 5

2. Turn part A of the connector around the tube and then push B forward to lock it.

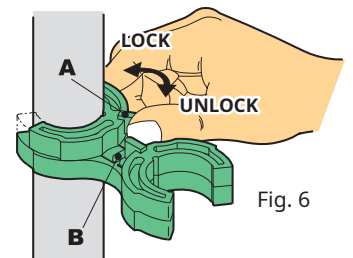


Fig. 6

3. Push part B and part A back to the original positions to unlock it, and pull tube from connector for separating two panels.

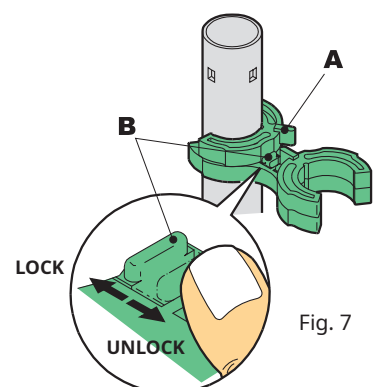
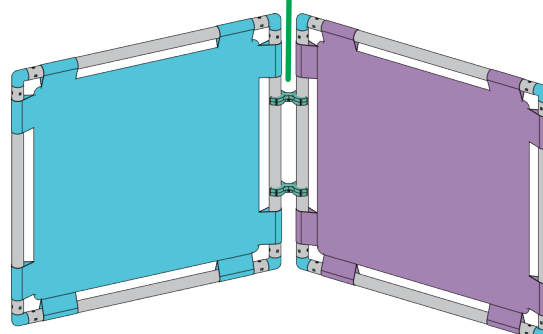
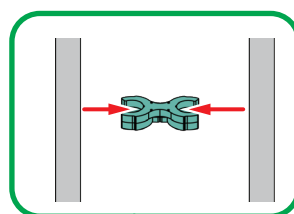
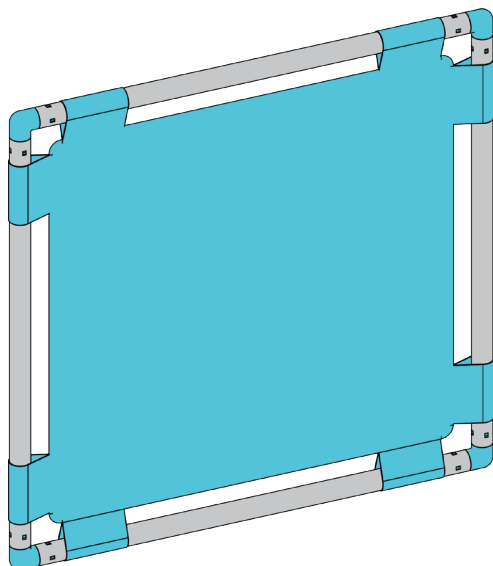
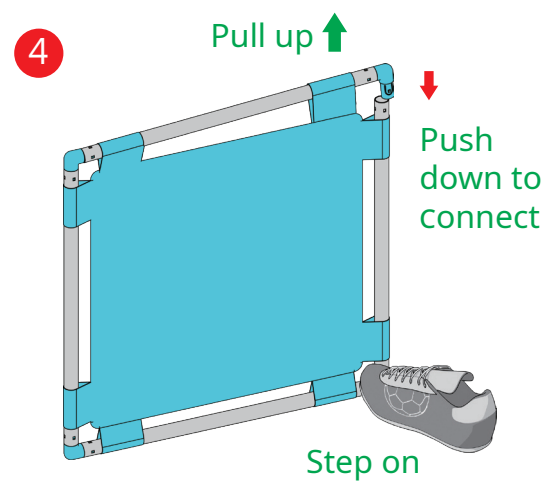
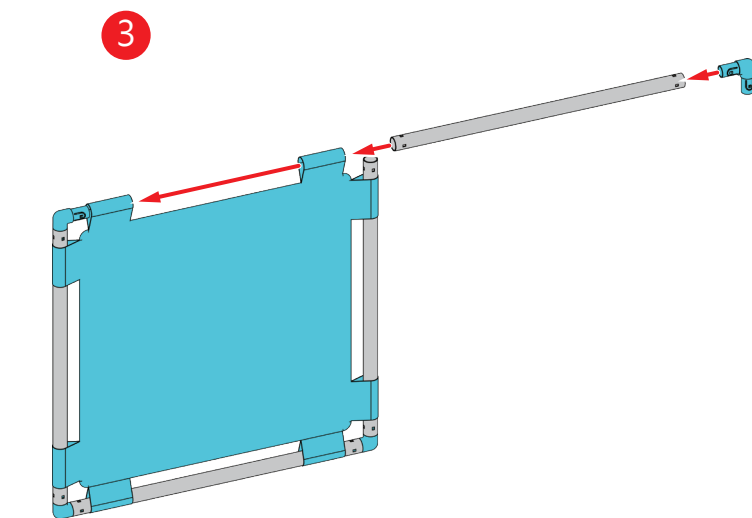
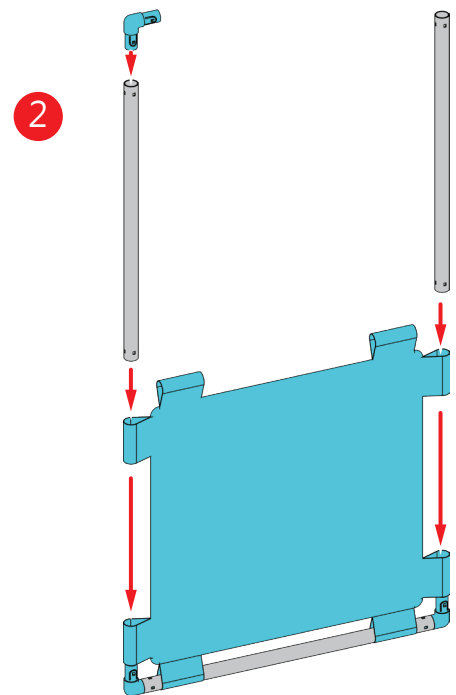
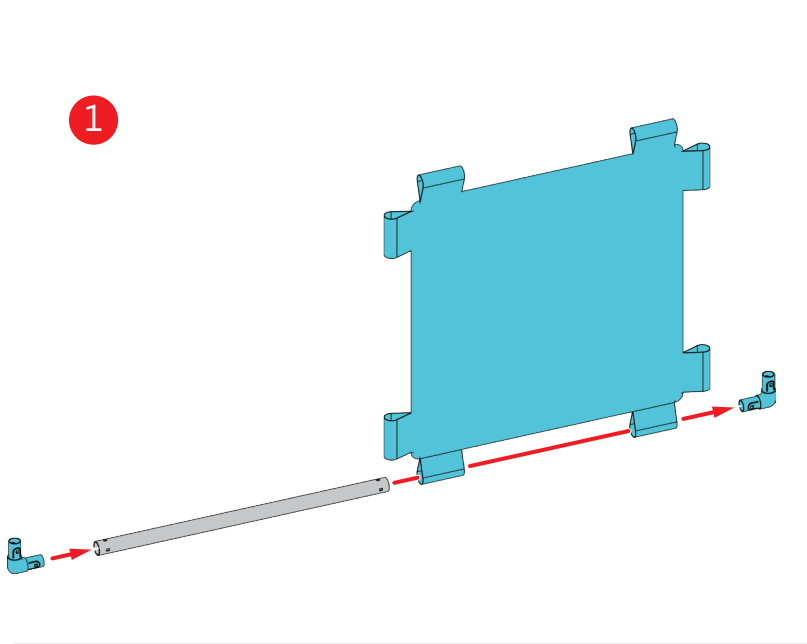


Fig. 7

Scan this QR code to view a troubleshooting video

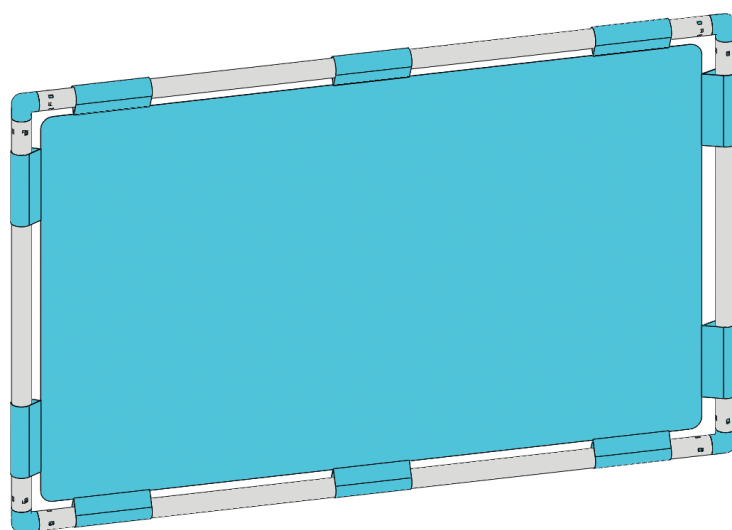
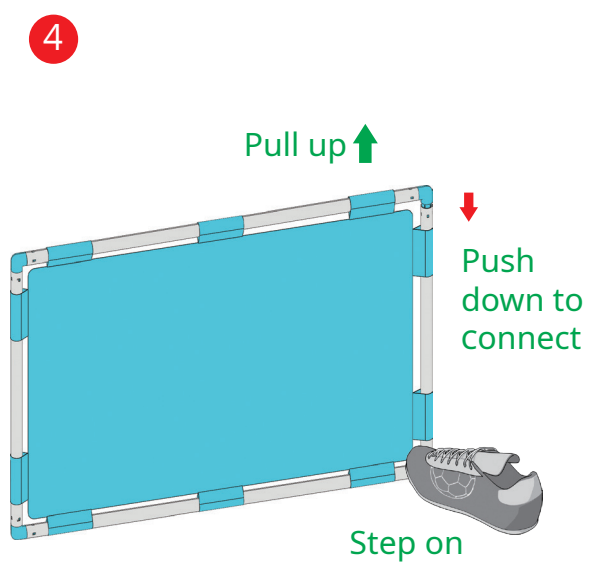
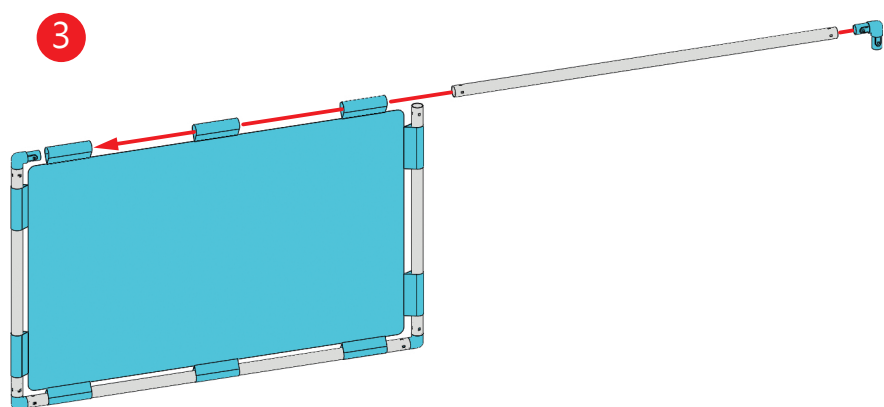
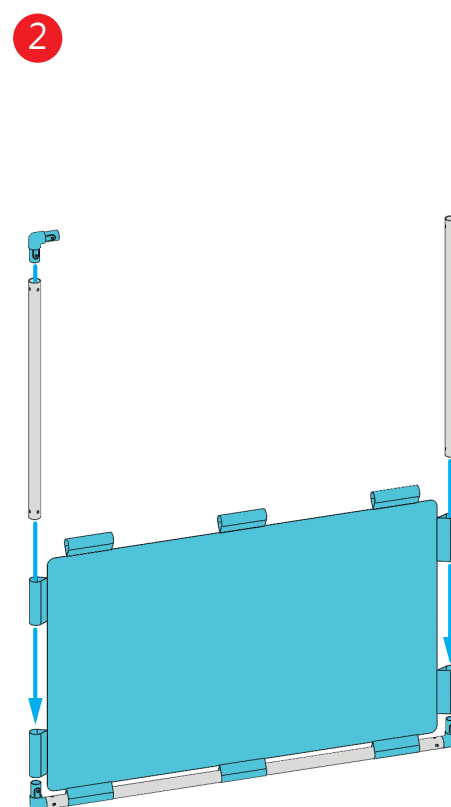
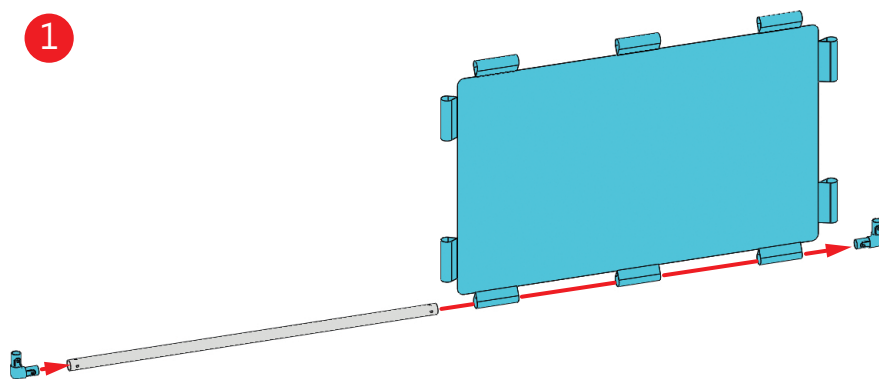


SQUARE VINYL PANEL



Done!

RECTANGULAR VINYL PANEL



Done!

1277 MY PLAY GYM (DOUBLE SLIDES)



3599S SET OF 4 CHAIRS



GENIUS TOY TAIWAN CO., LTD.
www.gigotoys.com

© 2021 Genius Toy Taiwan Co., Ltd. ALL RIGHTS RESERVED

R21#1060S-1